

**Page County, Iowa**  
Iowa South Zone (1402)  
Horiz. Datum: **NAD83(NA2011)**  
Vert. Datum: NAVD 1988  
US Survey Feet  
**2013**

Point Name: **36**

**Designation:** 2008-036 Page Co GPS Control Pt (Set by DCI in 2008)

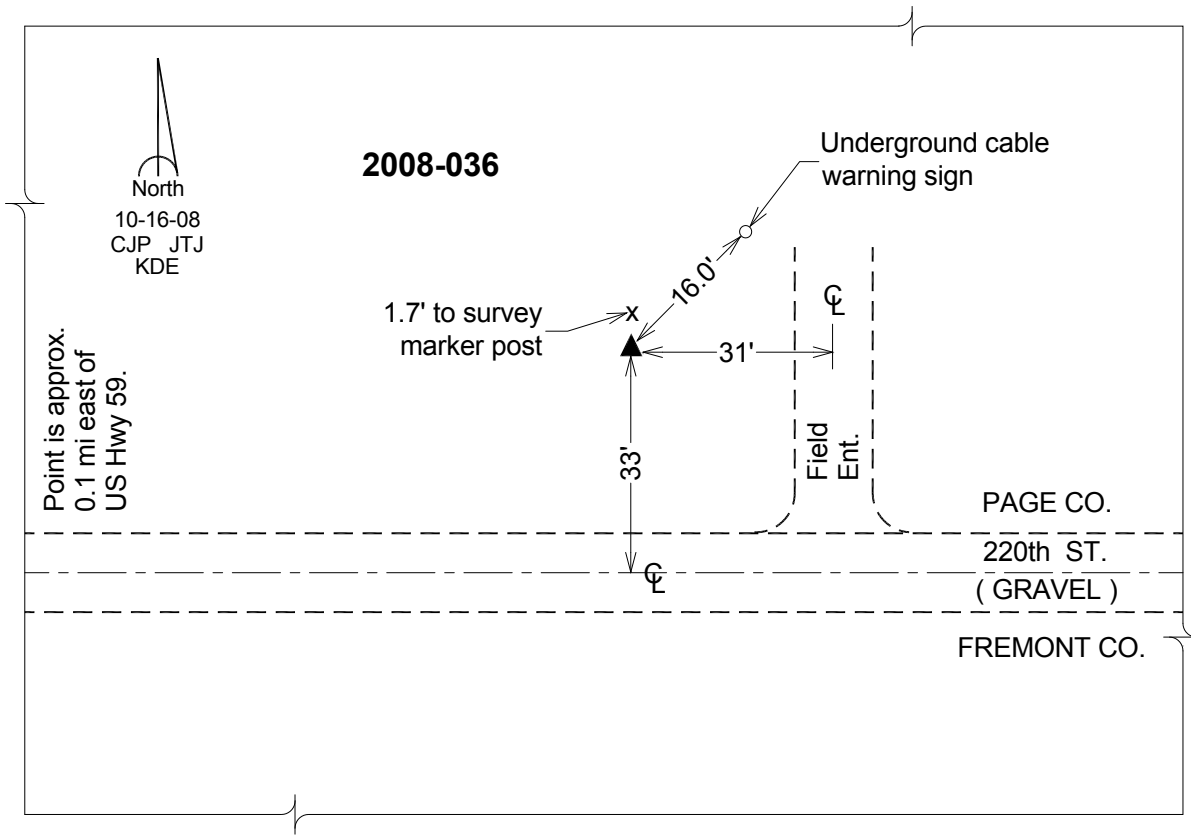
Northing: **271011.48sft**    Easting: **1118254.38sft**

Orthometric Height: **1068.94sft**    Ellipsoid Height: **968.77sft**    **Geoid12A**

Latitude: **N40°43'42.01389"**    Longitude: **W95°23'02.86651"**

Mapping Angle: **-1°14'28"**    Combination Scale Factor: **0.999935940**

**Monument Type:** Berntsen 3/4" Top Security Rod Monument with a 2-1/2" dia. domed survey cap and permanent magnet encased in a white PVC pipe with a NGS style alum. access cover.



*This document was prepared by DCI on 04-16-2013 for use by Page County, Iowa.*