

**Page County, Iowa**  
 Iowa South Zone (1402)  
 Horiz. Datum: **NAD83(NA2011)**  
 Vert. Datum: NAVD 1988  
 US Survey Feet  
**2013**

Point Name: **38**

**Designation:** 2008-038 Page Co GPS Control Pt (Set by DCI in 2008)

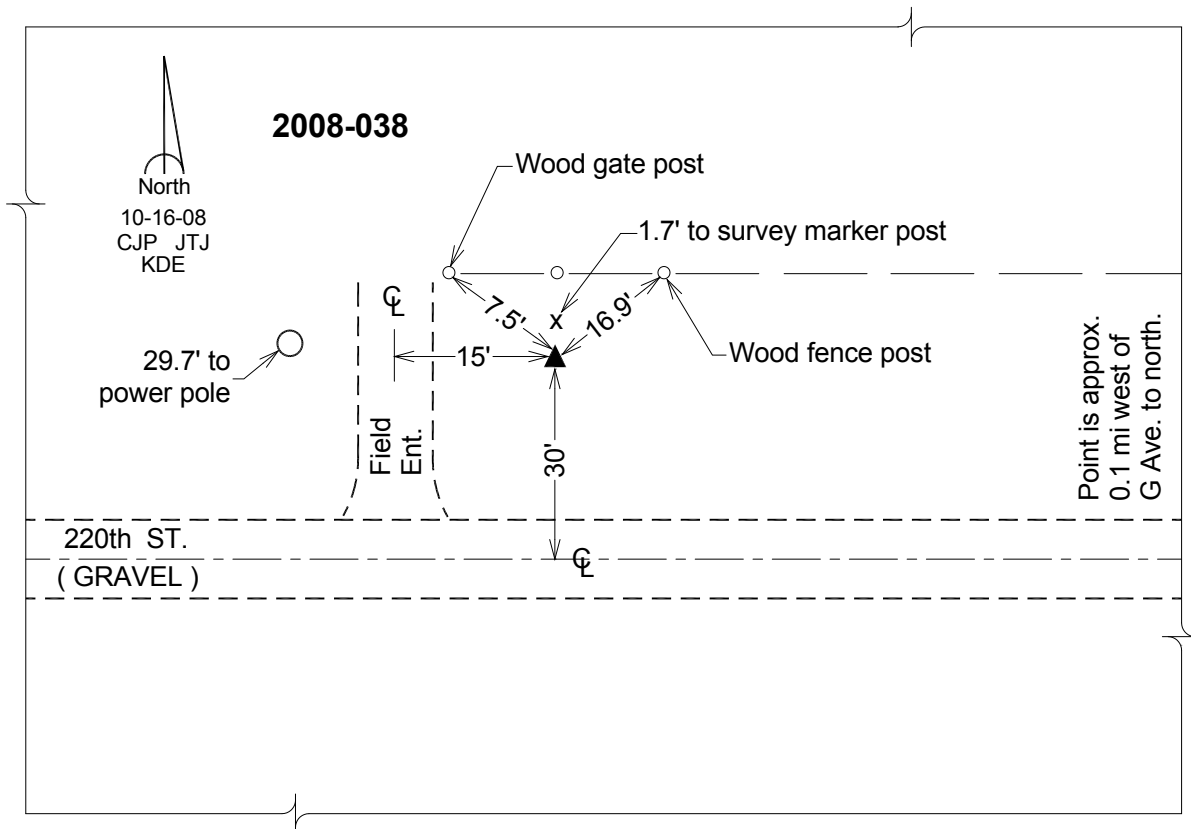
Northing: **269728.34sft** Easting: **1154501.69sft**

Orthometric Height: **1128.10sft** Ellipsoid Height: **1027.21sft** **Geoid12A**

Latitude: **N40°43'36.82595"** Longitude: **W95°15'11.81173"**

Mapping Angle: **-1°09'18"** Combination Scale Factor: **0.999933358**

**Monument Type:** Berntsen 3/4" Top Security Rod Monument with a 2-1/2" dia. domed survey cap and permanent magnet encased in a white PVC pipe with a NGS style alum. access cover.



*This document was prepared by DCI on 04-16-2013 for use by Page County, Iowa.*