

Page County, Iowa
Iowa South Zone (1402)
Horiz. Datum: **NAD83(NA2011)**
Vert. Datum: NAVD 1988
US Survey Feet
2013

Point Name: **40**

Designation: 2008-040 Page Co GPS Control Pt (Set by DCI in 2008)

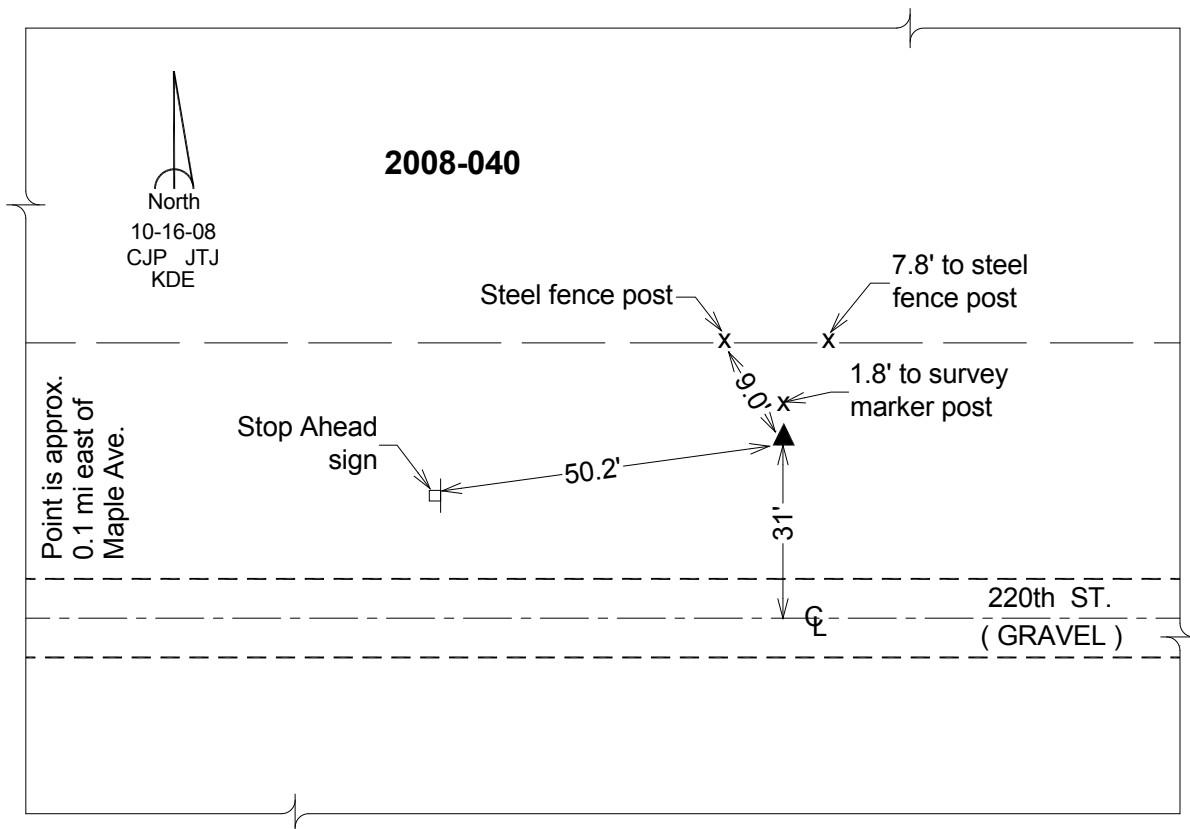
Northing: **269499.85sft** Easting: **1188319.39sft**

Orthometric Height: **1123.53sft** Ellipsoid Height: **1022.15sft** **Geoid12A**

Latitude: **N40°43'41.06936"** Longitude: **W95°07'52.58655"**

Mapping Angle: **-1°04'28"** Combination Scale Factor: **0.999933431**

Monument Type: Berntsen 3/4" Top Security Rod Monument with a 2-1/2" dia. domed survey cap and permanent magnet encased in a white PVC pipe with a NGS style alum. access cover.



This document was prepared by DCI on 04-16-2013 for use by Page County, Iowa.