

Page County, Iowa
Iowa South Zone (1402)
Horiz. Datum: **NAD83(NA2011)**
Vert. Datum: NAVD 1988
US Survey Feet
2013

Point Name: **43**

Designation: 2008-043 Page Co GPS Control Pt (Set by DCI in 2008)

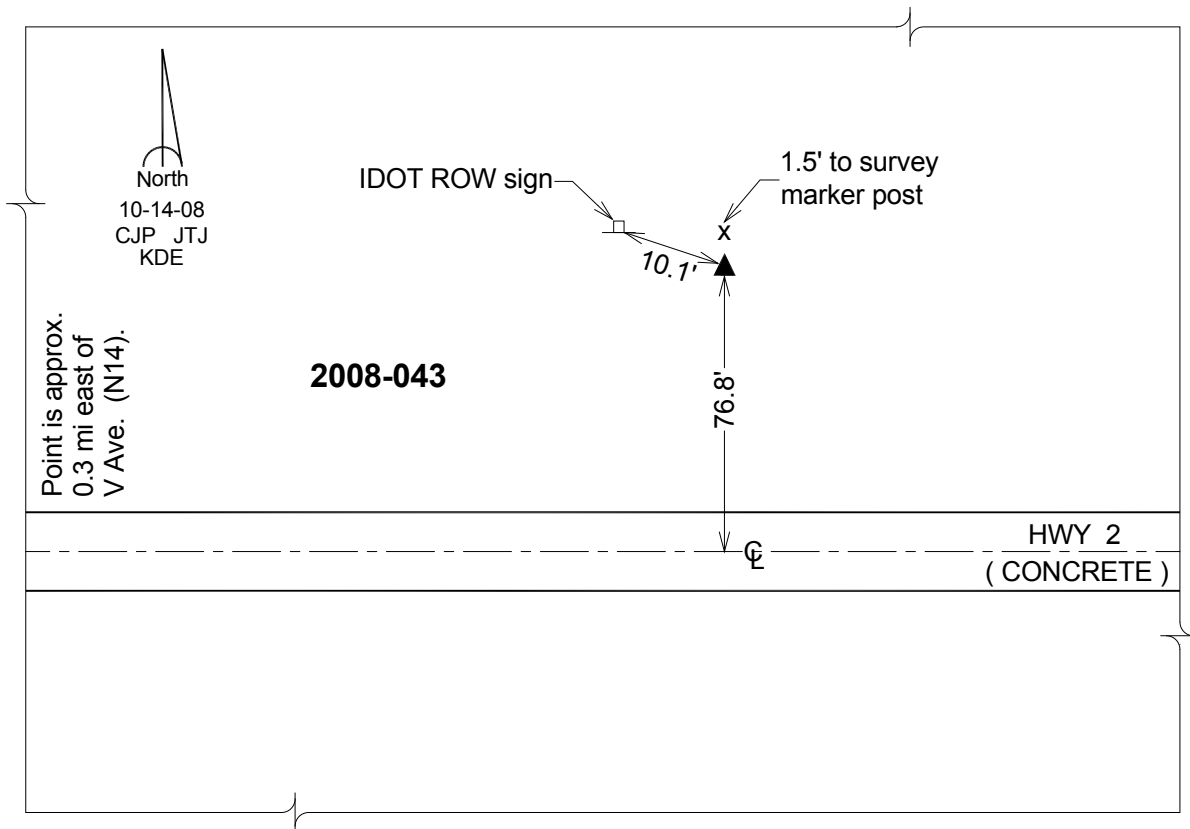
Northing: **268575.76sft** Easting: **1232976.74sft**

Orthometric Height: **1001.81sft** Ellipsoid Height: **900.03sft** **Geoid12A**

Latitude: **N40°43'39.80602"** Longitude: **W94°58'12.41681"**

Mapping Angle: **-0°58'06"** Combination Scale Factor: **0.999939308**

Monument Type: Berntsen 3/4" Top Security Rod Monument with a 2-1/2" dia. domed survey cap and permanent magnet encased in a white PVC pipe with a NGS style alum. access cover.



This document was prepared by DCI on 04-16-2013 for use by Page County, Iowa.