

Page County, Iowa
Iowa South Zone (1402)
Horiz. Datum: **NAD83(NA2011)**
Vert. Datum: NAVD 1988
US Survey Feet
2013

Point Name: **48**

Designation: 2008-048 Page Co GPS Control Pt (Set by DCI in 2008)

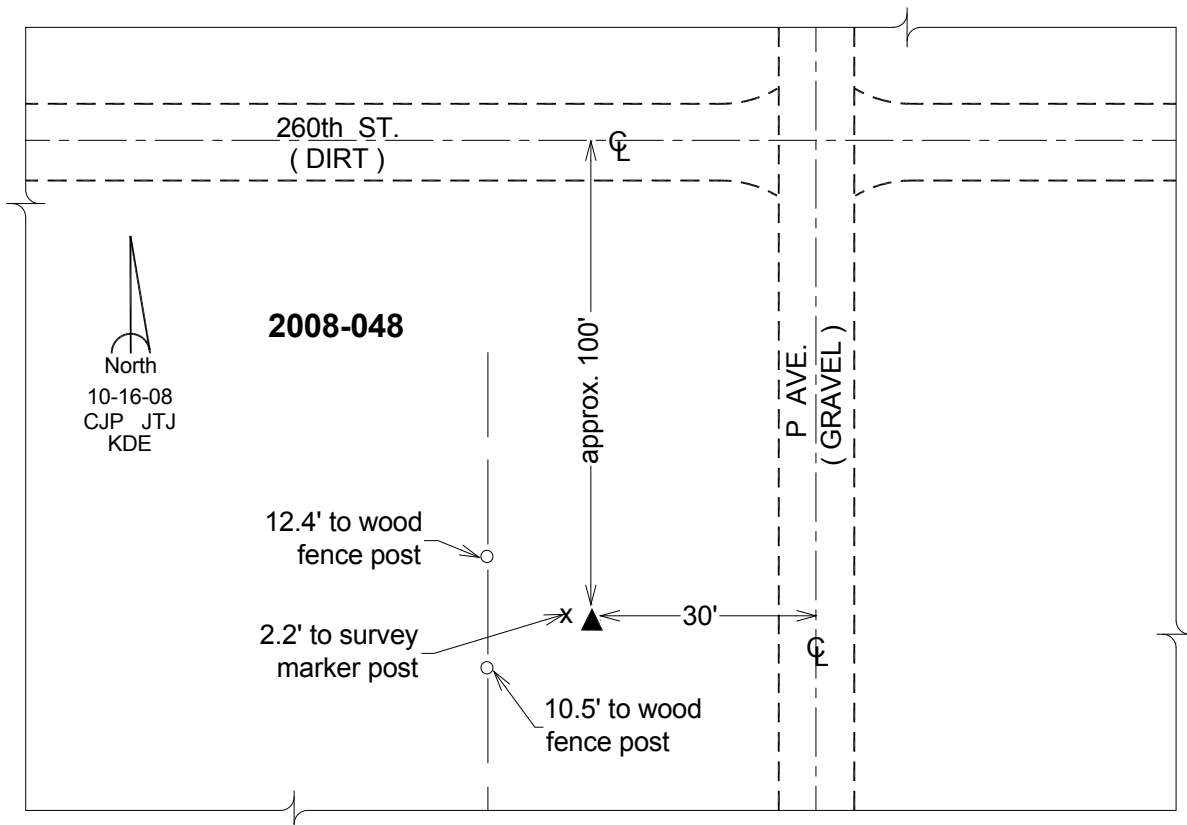
Northing: **246858.76sft** Easting: **1201386.28sft**

Orthometric Height: **1182.07sft** Ellipsoid Height: **1080.46sft** **Geoid12A**

Latitude: **N40°39'59.76990"** Longitude: **W95°04'57.53968"**

Mapping Angle: **-1°02'33"** Combination Scale Factor: **0.999940005**

Monument Type: Berntsen 3/4" Top Security Rod Monument with a 2-1/2" dia. domed survey cap and permanent magnet encased in a white PVC pipe with a NGS style alum. access cover.



This document was prepared by DCI on 04-16-2013 for use by Page County, Iowa.