

**Page County, Iowa**  
Iowa South Zone (1402)  
Horiz. Datum: **NAD83(NA2011)**  
Vert. Datum: NAVD 1988  
US Survey Feet  
**2013**

Point Name: **50**

**Designation:** 2008-050 Page Co GPS Control Pt (Set by DCI in 2008)

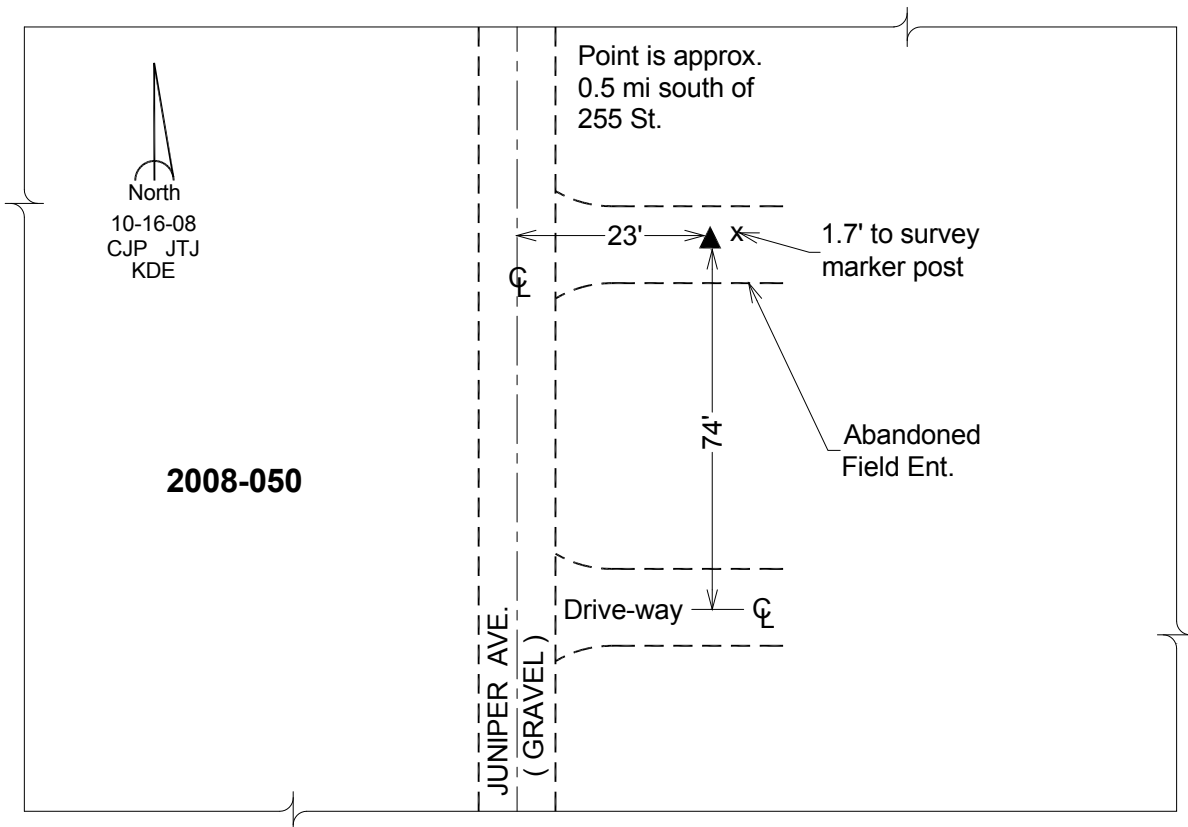
Northing: **247906.98sft** Easting: **1171031.19sft**

Orthometric Height: **1131.21sft** Ellipsoid Height: **1029.95sft** **Geoid12A**

Latitude: **N40°40'04.47988"** Longitude: **W95°11'31.64295"**

Mapping Angle: **-1°06'53"** Combination Scale Factor: **0.999942204**

**Monument Type:** Berntsen 3/4" Top Security Rod Monument with a 2-1/2" dia. domed survey cap and permanent magnet encased in a white PVC pipe with a NGS style alum. access cover.



*This document was prepared by DCI on 04-16-2013 for use by Page County, Iowa.*