

Page County, Iowa
Iowa South Zone (1402)
Horiz. Datum: **NAD83(NA2011)**
Vert. Datum: NAVD 1988
US Survey Feet
2013

Point Name: **54**

Designation: 2008-054 Page Co GPS Control Pt (Set by DCI in 2008)

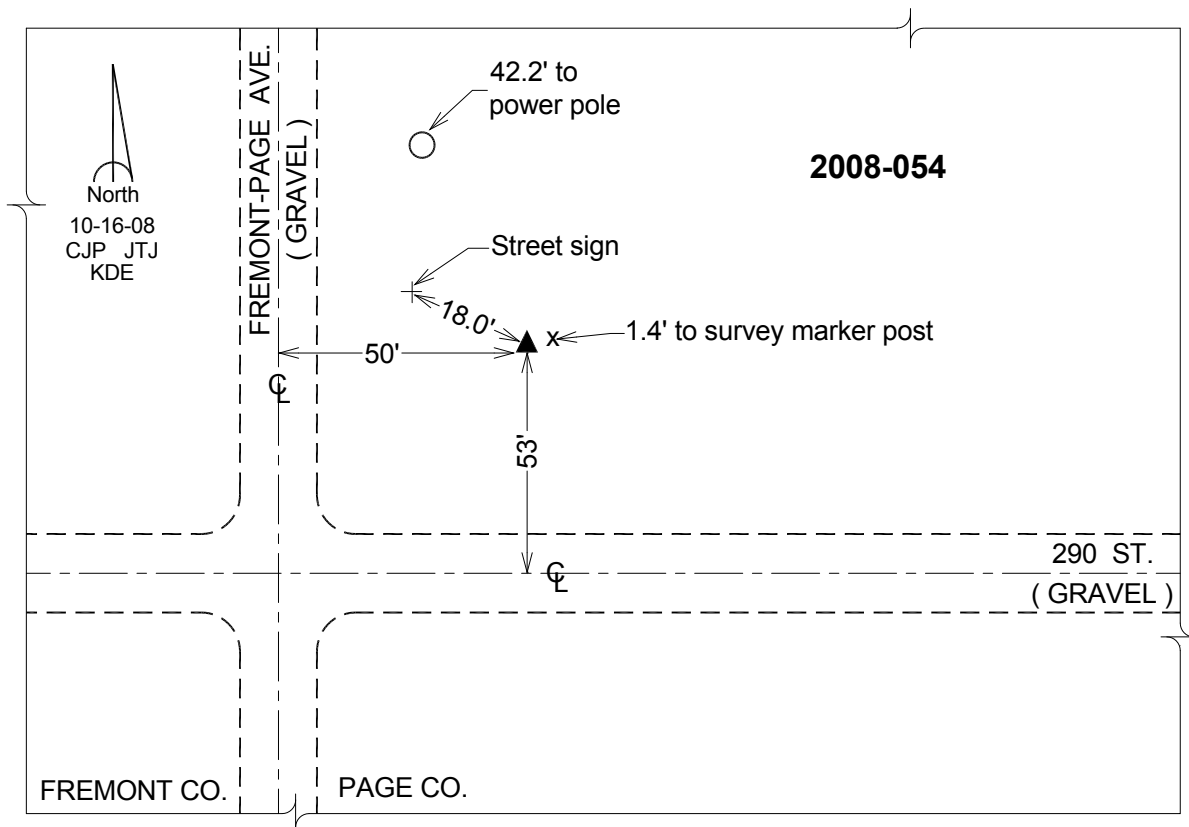
Northing: **233762.22**sft Easting: **1120334.79**sft

Orthometric Height: **1137.98**sft Ellipsoid Height: **1037.51**sft **Geoid12A**

Latitude: **N40°37'34.47346"** Longitude: **W95°22'25.42888"**

Mapping Angle: **-1°14'03"** Combination Scale Factor: **0.999948816**

Monument Type: Berntsen 3/4" Top Security Rod Monument with a 2-1/2" dia. domed survey cap and permanent magnet encased in a white PVC pipe with a NGS style alum. access cover.



This document was prepared by DCI on 04-16-2013 for use by Page County, Iowa.