

**Page County, Iowa**  
Iowa South Zone (1402)  
Horiz. Datum: **NAD83(NA2011)**  
Vert. Datum: NAVD 1988  
US Survey Feet  
**2013**

Point Name: **55**

**Designation:** 2008-055 Page Co GPS Control Pt (Set by DCI in 2008)

Northing: **233289.95**sft    Easting: **1136233.70**sft

Orthometric Height: **1083.12**sft    Ellipsoid Height: **982.32**sft    **Geoid12A**

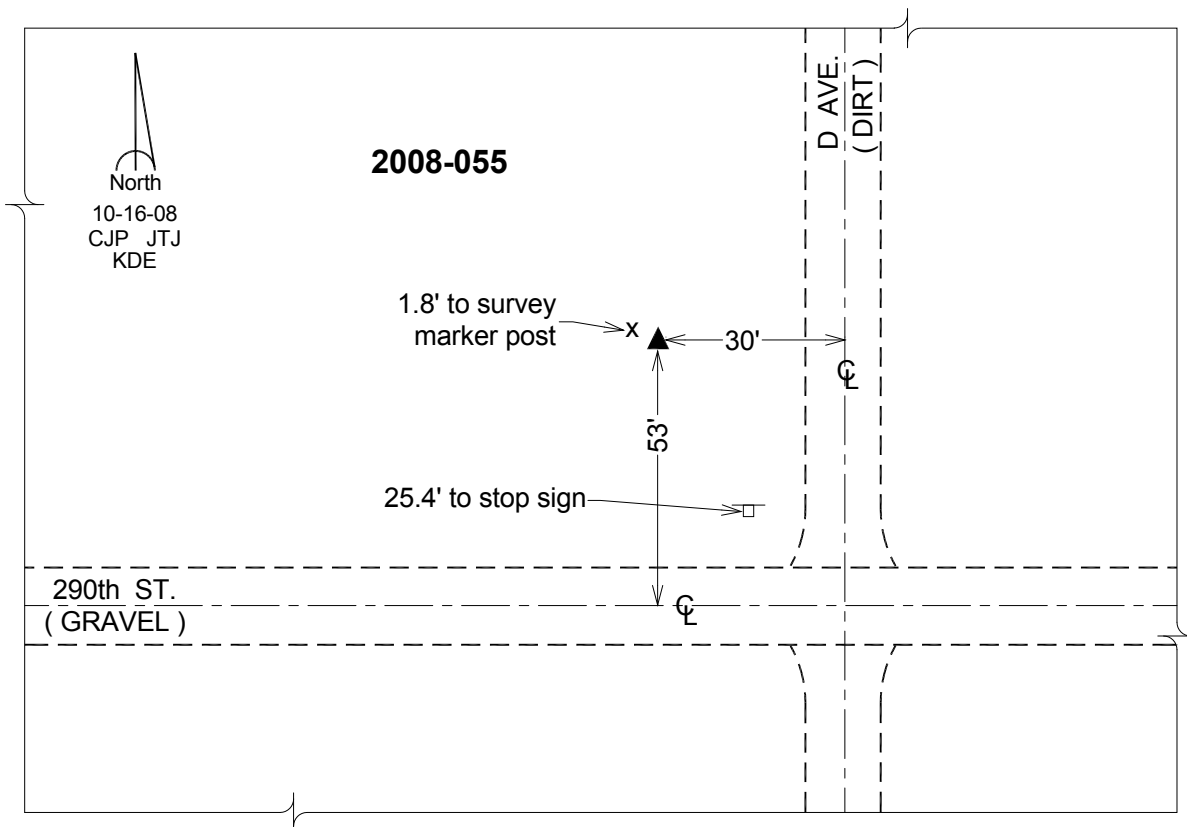
Latitude: **N40°37'33.14001"**

Longitude: **W95°18'59.15405"**

Mapping Angle: **-1°11'47"**

Combination Scale Factor: **0.999951514**

**Monument Type:** Berntsen 3/4" Top Security Rod Monument with a 2-1/2" dia. domed survey cap and permanent magnet encased in a white PVC pipe with a NGS style alum. access cover.



*This document was prepared by DCI on 04-16-2013 for use by Page County, Iowa.*