

**Page County, Iowa**  
Iowa South Zone (1402)  
Horiz. Datum: **NAD83(NA2011)**  
Vert. Datum: NAVD 1988  
US Survey Feet  
**2013**

Point Name: **56**

**Designation:** 2008-056 Page Co GPS Control Pt (Set by DCI in 2008)

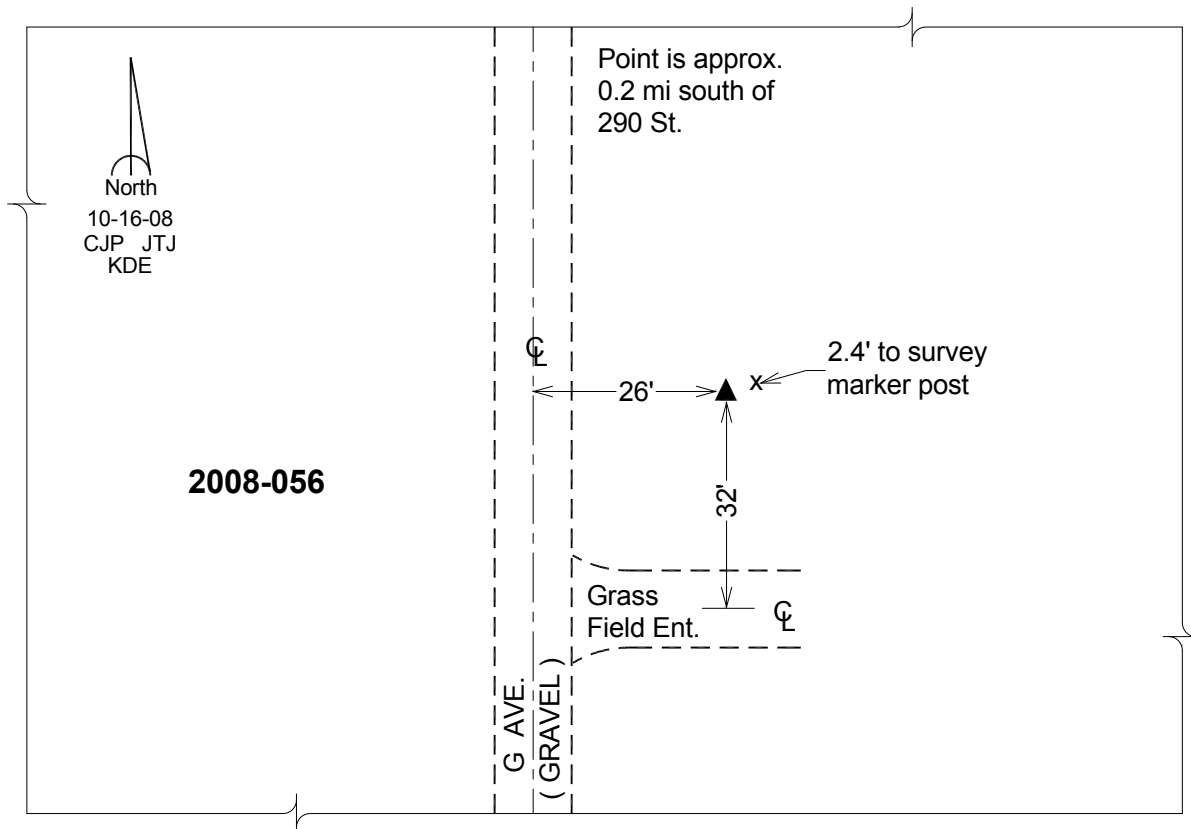
Northing: **231523.48sft**    Easting: **1152131.57sft**

Orthometric Height: **1103.31sft**    Ellipsoid Height: **1002.25sft**                      **Geoid12A**

Latitude: **N40°37'18.91714"**                      Longitude: **W95°15'32.55559"**

Mapping Angle: **-1°09'31"**                      Combination Scale Factor: **0.999951251**

**Monument Type:** Berntsen 3/4" Top Security Rod Monument with a 2-1/2" dia. domed survey cap and permanent magnet encased in a white PVC pipe with a NGS style alum. access cover.



*This document was prepared by DCI on 04-16-2013 for use by Page County, Iowa.*