

**Page County, Iowa**  
Iowa South Zone (1402)  
Horiz. Datum: **NAD83(NA2011)**  
Vert. Datum: NAVD 1988  
US Survey Feet  
**2013**

Point Name: **57**

**Designation:** 2008-057 Page Co GPS Control Pt (Set by DCI in 2008)

Northing: **232348.17sft**    Easting: **1167860.24sft**

Orthometric Height: **1058.64sft**    Ellipsoid Height: **957.35sft**    **Geoid12A**

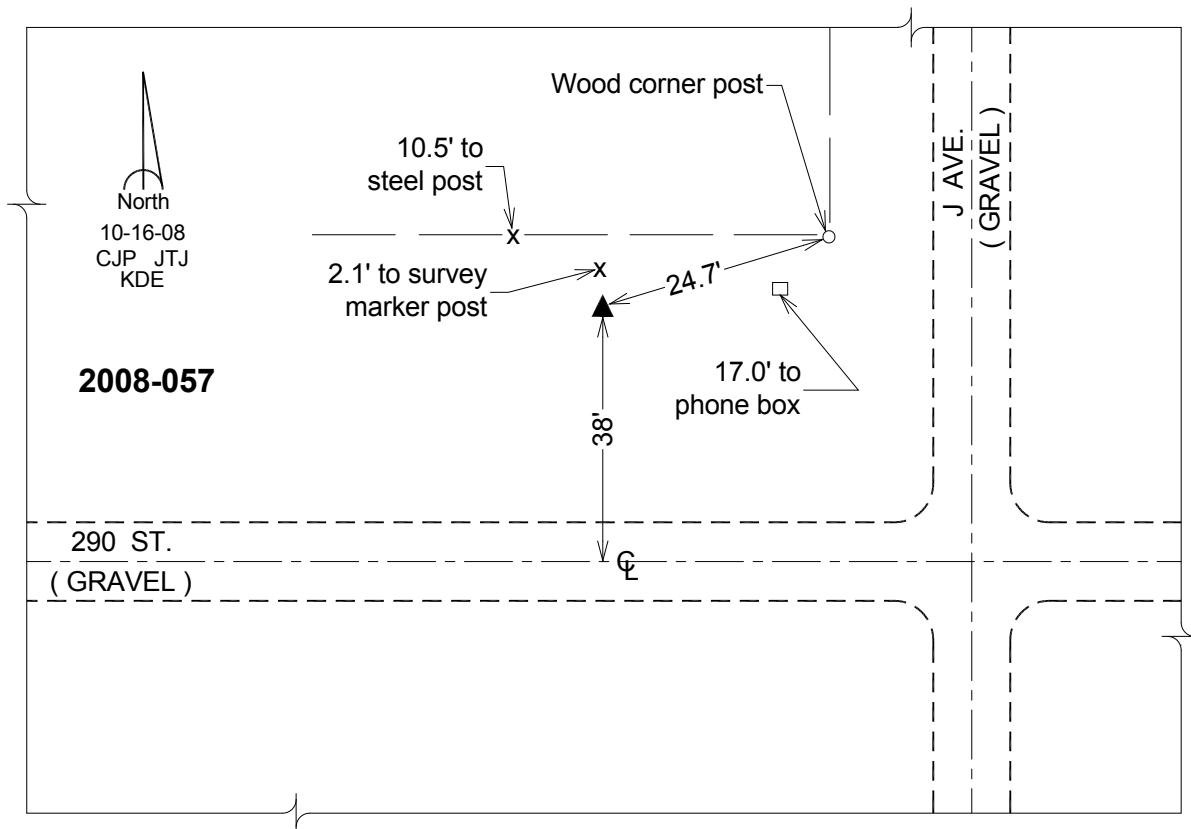
Latitude: **N40°37'30.15680"**

Longitude: **W95°12'08.83320"**

Mapping Angle: **-1°07'17"**

Combination Scale Factor: **0.999952849**

**Monument Type:** Berntsen 3/4" Top Security Rod Monument with a 2-1/2" dia. domed survey cap and permanent magnet encased in a white PVC pipe with a NGS style alum. access cover.



*This document was prepared by DCI on 04-16-2013 for use by Page County, Iowa.*