

**Page County, Iowa**  
Iowa South Zone (1402)  
Horiz. Datum: **NAD83(NA2011)**  
Vert. Datum: NAVD 1988  
US Survey Feet  
**2013**

Point Name: **62**

**Designation:** 2008-062 Page Co GPS Control Pt (Set by DCI in 2008)

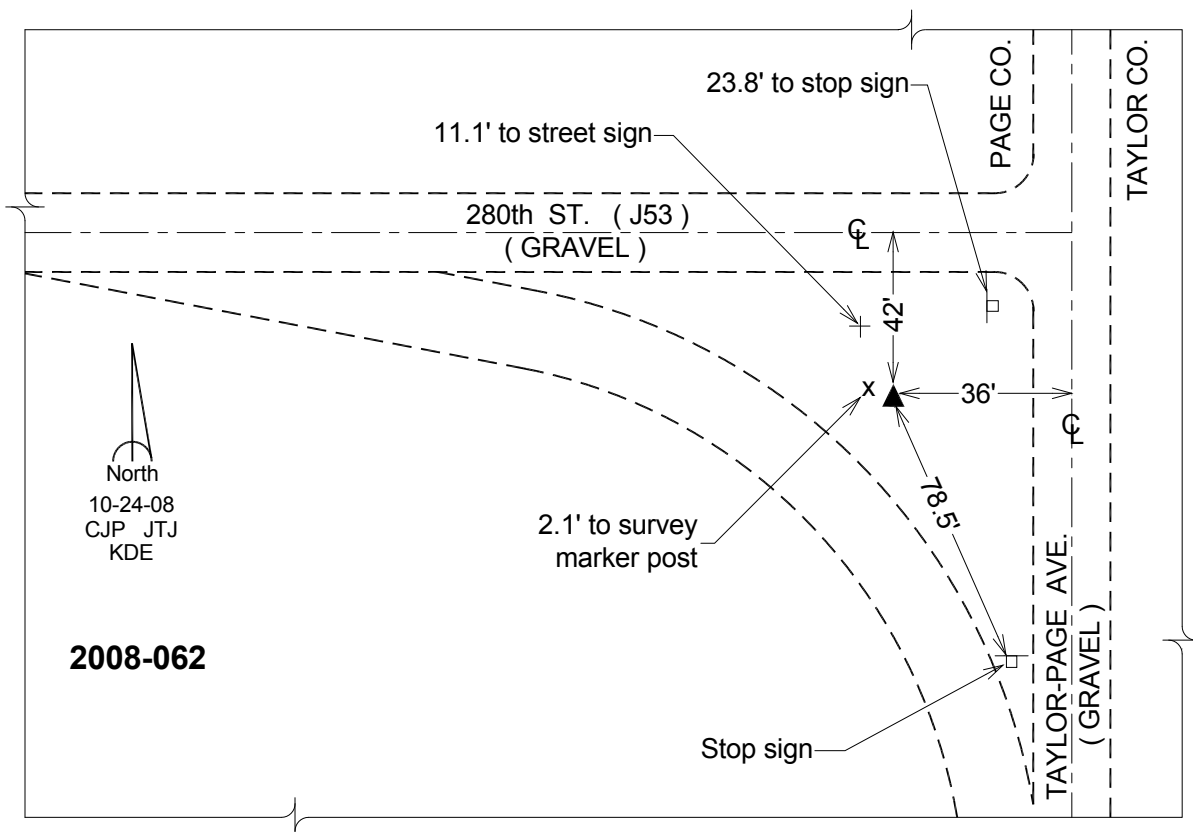
Northing: **234551.63sft** Easting: **1247738.98sft**

Orthometric Height: **1164.38sft** Ellipsoid Height: **1062.27sft** **Geoid12A**

Latitude: **N40°38'06.06921"** Longitude: **W94°54'53.50987"**

Mapping Angle: **-0°55'55"** Combination Scale Factor: **0.999946122**

**Monument Type:** Berntsen 3/4" Top Security Rod Monument with a 2-1/2" dia. domed survey cap and permanent magnet encased in a white PVC pipe with a NGS style alum. access cover.



*This document was prepared by DCI on 04-16-2013 for use by Page County, Iowa.*