

Page County, Iowa
Iowa South Zone (1402)
Horiz. Datum: **NAD83(NA2011)**
Vert. Datum: NAVD 1988
US Survey Feet
2013

Point Name: **63**

Designation: 2008-063 Page Co GPS Control Pt (Set by DCI in 2008)

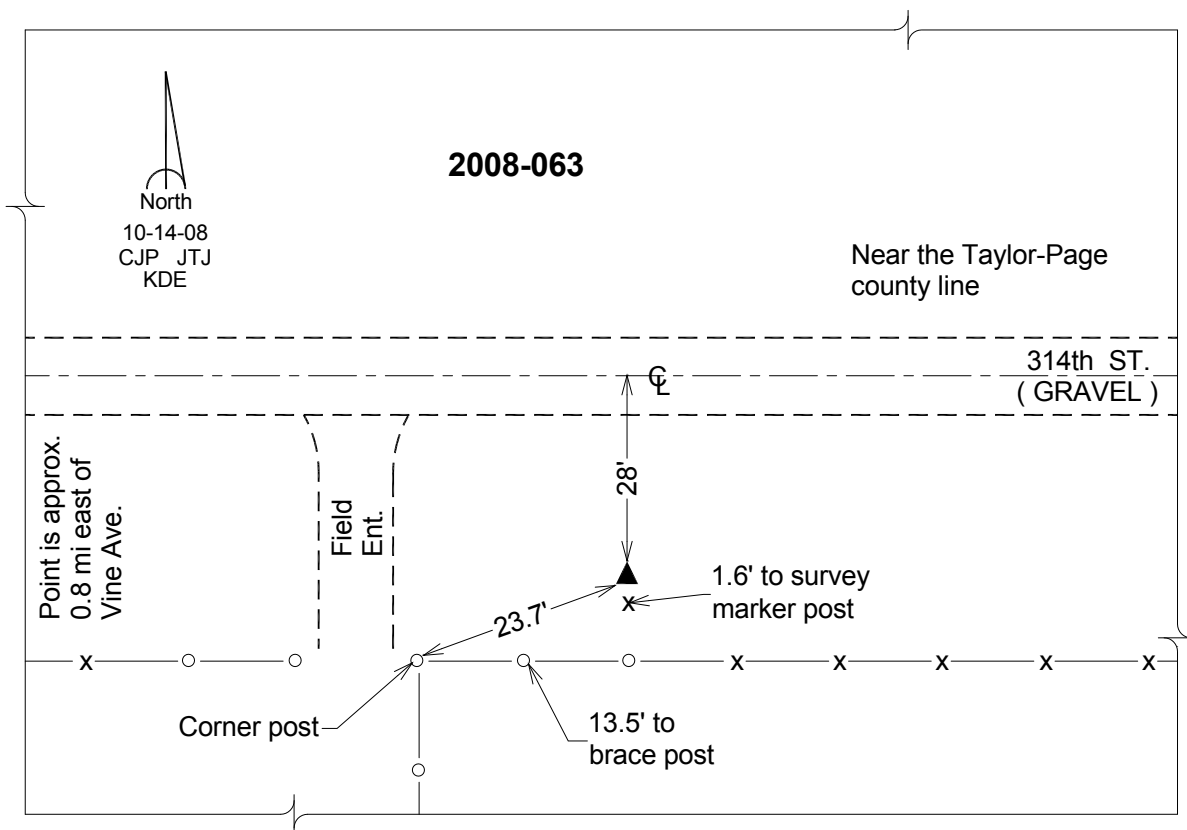
Northing: **217433.24sft** Easting: **1247494.32sft**

Orthometric Height: **1102.46sft** Ellipsoid Height: **1000.21sft** **Geoid12A**

Latitude: **N40°35'16.90064"** Longitude: **W94°54'53.07164"**

Mapping Angle: **-0°55'55"** Combination Scale Factor: **0.999957450**

Monument Type: Berntsen 3/4" Top Security Rod Monument with a 2-1/2" dia. domed survey cap and permanent magnet encased in a white PVC pipe with a NGS style alum. access cover.



This document was prepared by DCI on 04-16-2013 for use by Page County, Iowa.