

Page County, Iowa
Iowa South Zone (1402)
Horiz. Datum: **NAD83(NA2011)**
Vert. Datum: NAVD 1988
US Survey Feet
2013

Point Name: **69**

Designation: 2008-069 Page Co GPS Control Pt (Set by DCI in 2008)

Northing: **216908.21**sft Easting: **1152239.82**sft

Orthometric Height: **1057.18**sft Ellipsoid Height: **956.08**sft **Geoid12A**

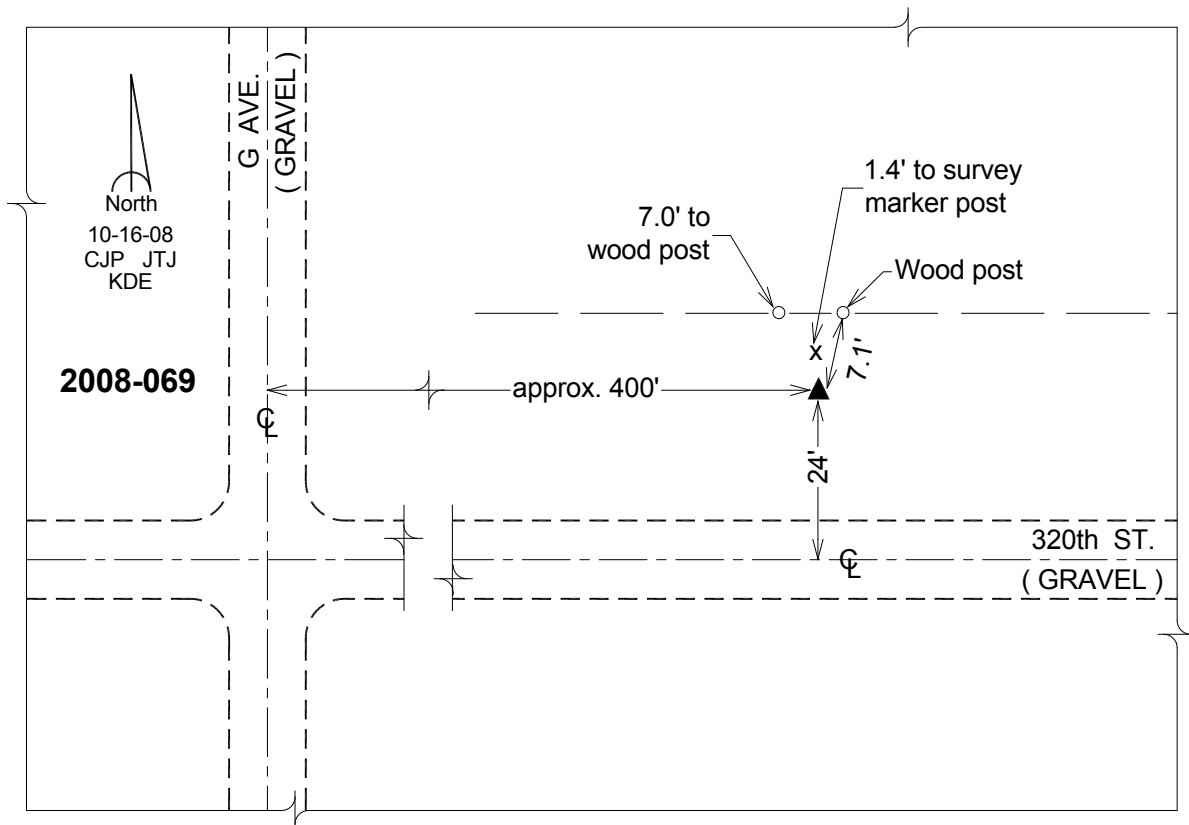
Latitude: **N40°34'54.55066"**

Longitude: **W95°15'27.32269"**

Mapping Angle: **-1°09'28"**

Combination Scale Factor: **0.999960710**

Monument Type: Berntsen 3/4" Top Security Rod Monument with a 2-1/2" dia. domed survey cap and permanent magnet encased in a white PVC pipe with a NGS style alum. access cover.



This document was prepared by DCI on 04-16-2013 for use by Page County, Iowa.