

Page County, Iowa
Iowa South Zone (1402)
Horiz. Datum: **NAD83(NA2011)**
Vert. Datum: NAVD 1988
US Survey Feet
2013

Point Name: **1005**

Designation: CBN horizontal control station "SDA A" PID: AE2142

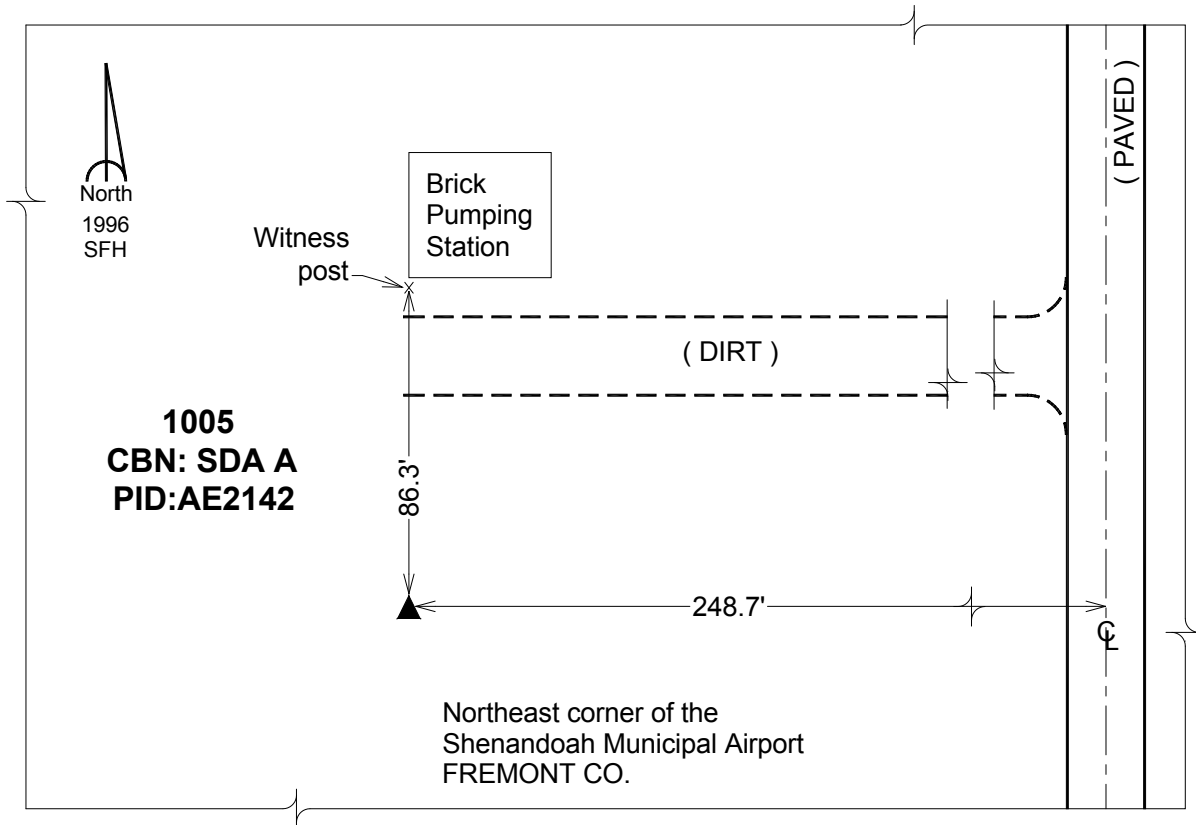
Northing: **280693.90sft** Easting: **1112713.76sft**

Orthometric Height: **971.87sft** Ellipsoid Height: **872.00sft** **Geoid12A**

Latitude: **N40°45'16.47345"** Longitude: **W95°24'17.56993"**

Mapping Angle: **-1°15'17"** Combination Scale Factor: **0.999936913**

Monument Type: The station mark is a stainless steel rod/datum point set in a pvc sleeve with access through a 5" logo cap. Mark is 86.3ft south of a witness post.



This document was prepared by DCI on 04-16-2013 for use by Page County, Iowa.