

**Page County, Iowa**  
Iowa South Zone (1402)  
Horiz. Datum: **NAD83(NA2011)**  
Vert. Datum: NAVD 1988  
US Survey Feet  
**2013**

Point Name: **1014**

**Designation:** NGS 2nd order vertical station "J 161" PID: LF0279

Northing: **333382.92sft** Easting: **1151153.11sft**

Orthometric Height: **1007.43sft** Ellipsoid Height: **908.28sft** **Geoid12A**

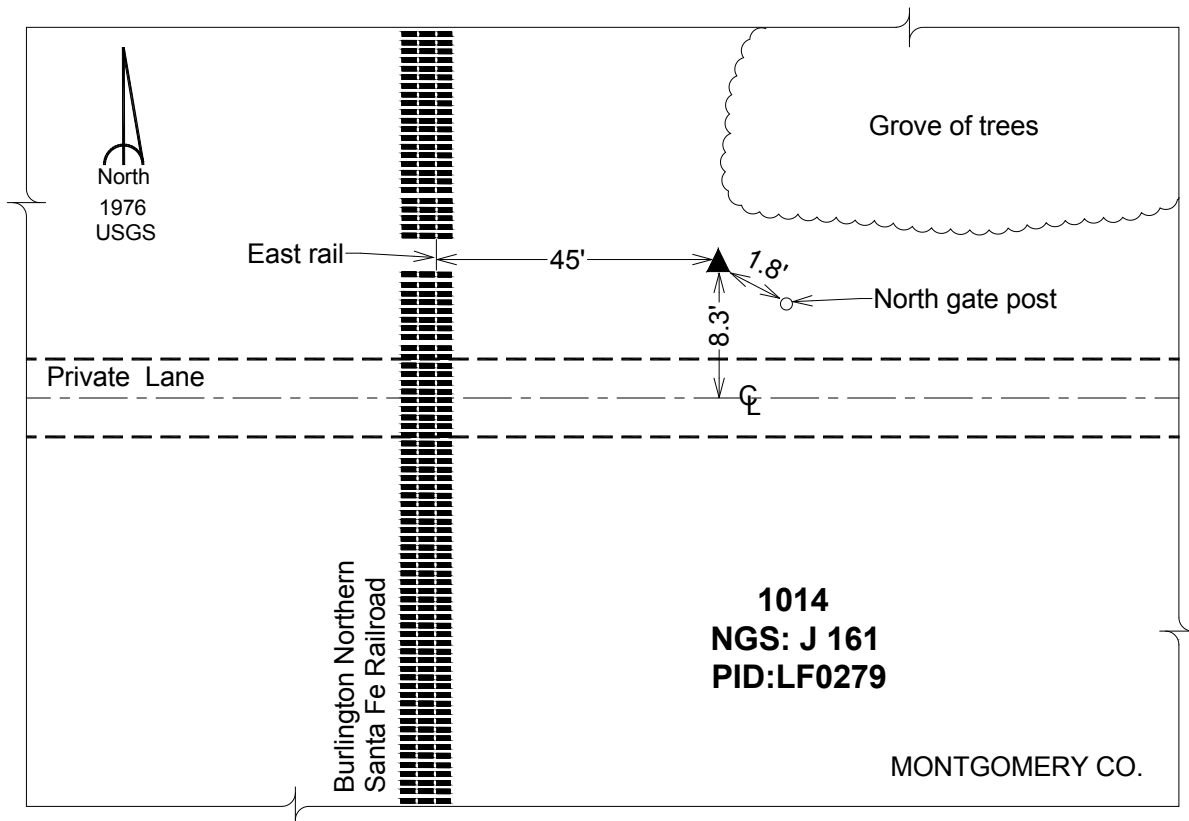
Latitude: **N40°54'05.01235"**

Longitude: **W95°16'12.11963"**

Mapping Angle: **-1°09'57"**

Combination Scale Factor: **0.999918618**

**Monument Type:** The station is a CGS bench mark disk stamped "J 161 1949" and set in the top of a concrete monument.



*This document was prepared by DCI on 04-16-2013 for use by Page County, Iowa.*