

Page County, Iowa
Iowa South Zone (1402)
Horiz. Datum: **NAD83(NA2011)**
Vert. Datum: NAVD 1988
US Survey Feet
2013

Point Name: **1020**

Designation: NGS 2nd order vertical station "C 108 1935" PID: LF0295

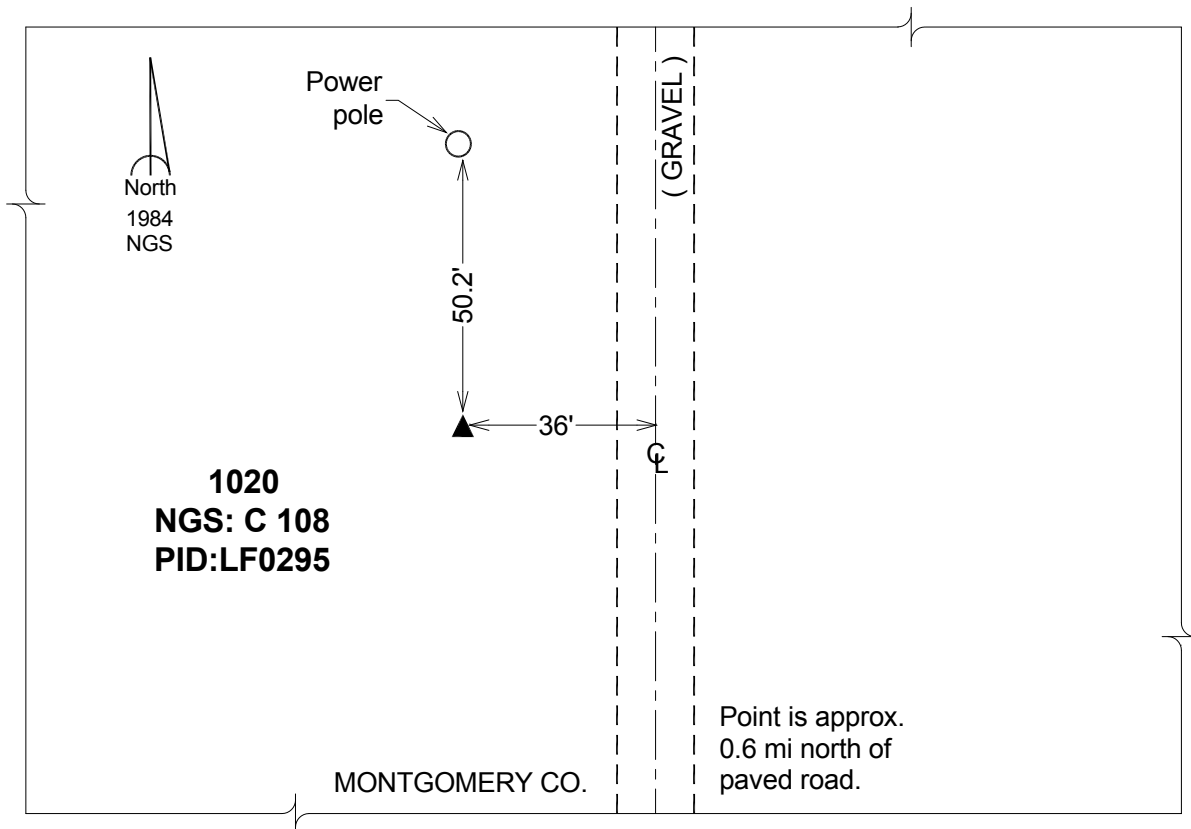
Northing: **342904.41sft** Easting: **1224685.15sft**

Orthometric Height: **1037.32sft** Ellipsoid Height: **936.96sft** **Geoid12A**

Latitude: **N40°55'52.75533"** Longitude: **W95°00'16.79849"**

Mapping Angle: **-0°59'28"** Combination Scale Factor: **0.999914672**

Monument Type: The station is a CGS bench mark disk stamped "C 108 1935" and set in the top of a concrete monument.



This document was prepared by DCI on 04-16-2013 for use by Page County, Iowa.