

Page County, Iowa
Iowa South Zone (1402)
Horiz. Datum: **NAD83(NA2011)**
Vert. Datum: NAVD 1988
US Survey Feet
2013

Point Name: **1030**

Designation: NGS 2nd order vertical station "A 107 1935" PID: LF0214

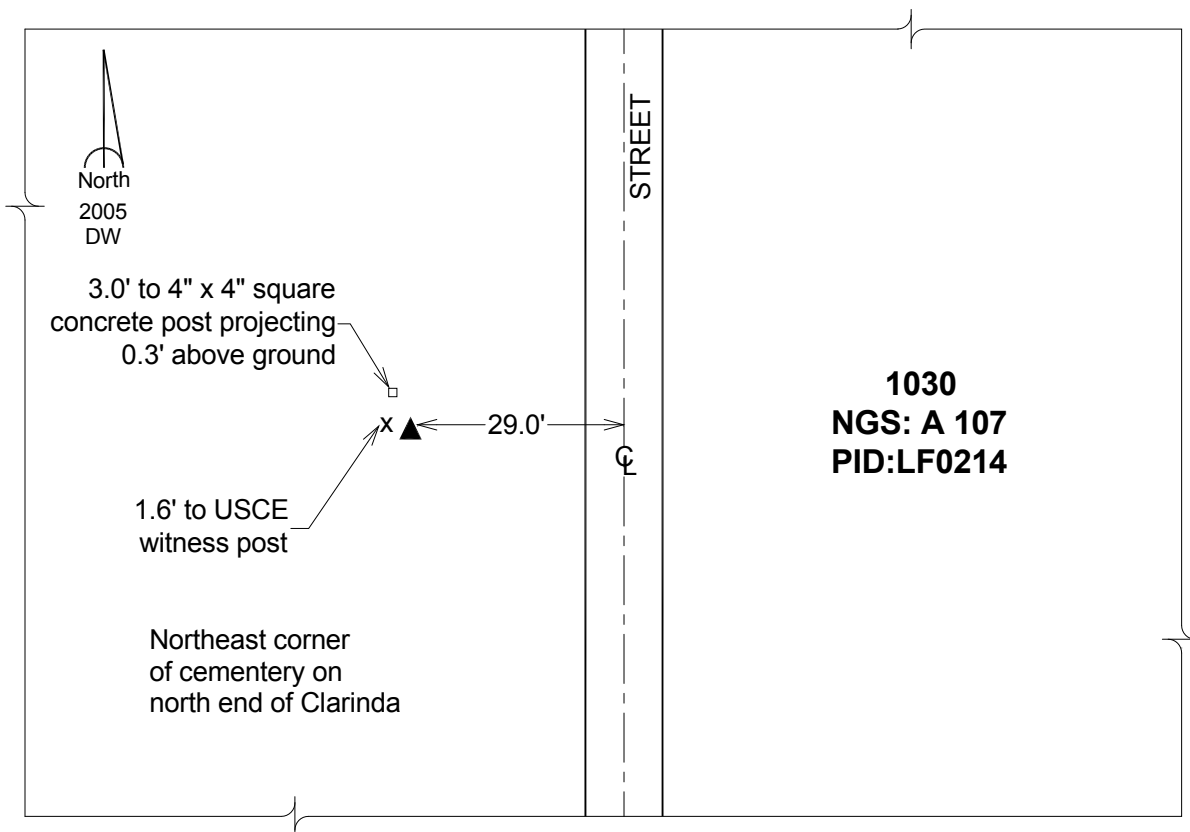
Northing: **276940.97sft** Easting: **1214435.19sft**

Orthometric Height: **1051.13sft** Ellipsoid Height: **949.55sft** **Geoid12A**

Latitude: **N40°44'59.28516"** Longitude: **W95°02'15.13253"**

Mapping Angle: **-1°00'46"** Combination Scale Factor: **0.999933860**

Monument Type: The station is a CGS bench mark disk stamped "A 107 1935" and set in the top of a concrete monument.



This document was prepared by DCI on 04-16-2013 for use by Page County, Iowa.