

Page County, Iowa
Iowa South Zone (1402)
Horiz. Datum: **NAD83(NA2011)**
Vert. Datum: NAVD 1988
US Survey Feet
2013

Point Name: **1040**

Designation: FBN Horiz & 1st order Vert control station "S 8" PID: LF0231

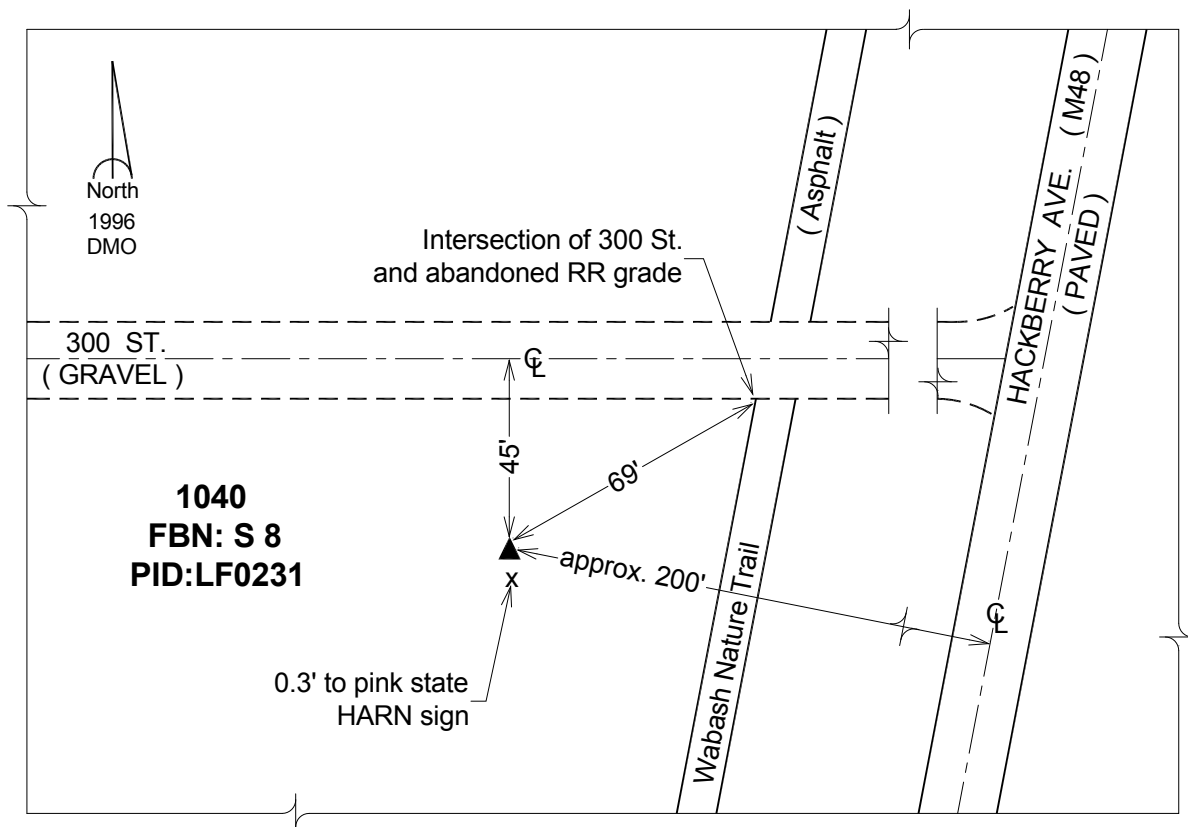
Northing: **227105.65sft** Easting: **1162771.95sft**

Orthometric Height: **973.64sft** Ellipsoid Height: **872.40sft** **Geoid12A**

Latitude: **N40°36'37.37480"** Longitude: **W95°13'13.46418"**

Mapping Angle: **-1°08'00"** Combination Scale Factor: **0.999959486**

Monument Type: The station is a CGS bench mark disk stamped "S 8 1933" and set in the top of a concrete monument.



This document was prepared by DCI on 04-16-2013 for use by Page County, Iowa.