

Page County, Iowa
 Iowa South Zone (1402)
 Horiz. Datum: **NAD83(NA2011)**
 Vert. Datum: NAVD 1988
 US Survey Feet
2013

Point Name: **1052**

Designation: 2006-052 Mills Co GPS Control Pt. (Set by DCI in 2006)

Northing: **334111.82sft** Easting: **1119273.99sft**

Orthometric Height: **1021.75sft** Ellipsoid Height: **923.72sft** **Geoid12A**

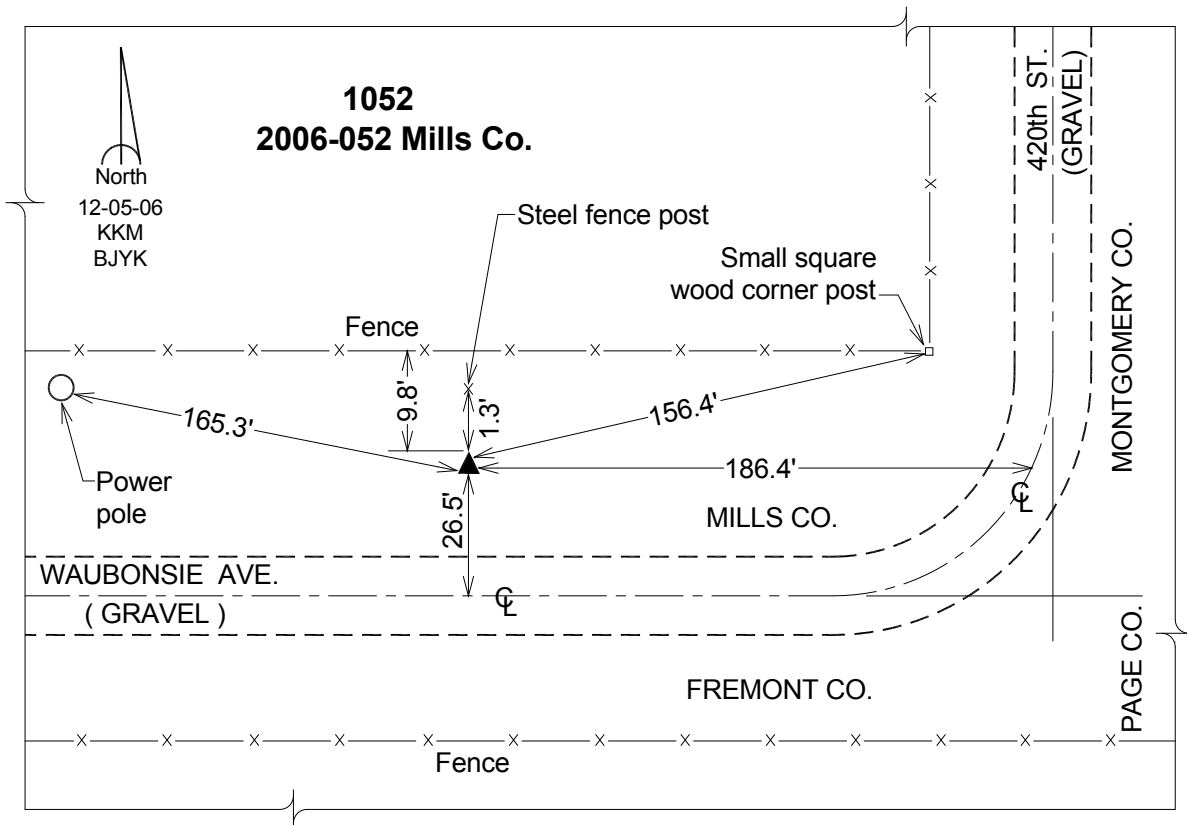
Latitude: **N40°54'05.59472"**

Longitude: **W95°23'07.38980"**

Mapping Angle: **-1°14'31"**

Combination Scale Factor: **0.999917866**

Monument Type: Berntsen Top Security Rod Monument with a 2-1/2" dia. domed survey cap and permanent magnet encased in a white PVC pipe with a NGS style aluminum access cover.



This document was prepared by DCI on 04-16-2013 for use by Page County, Iowa.