

Page County, Iowa
Iowa South Zone (1402)
Horiz. Datum: **NAD83(NA2011)**
Vert. Datum: NAVD 1988
US Survey Feet
2013

Point Name: **1070**

Designation: FBN Horiz & 1st order Vert control station "C 20" PID: LF0151

Northing: **134804.48sft** Easting: **1244815.30sft**

Orthometric Height: **1094.91sft** Ellipsoid Height: **992.23sft** **Geoid12A**

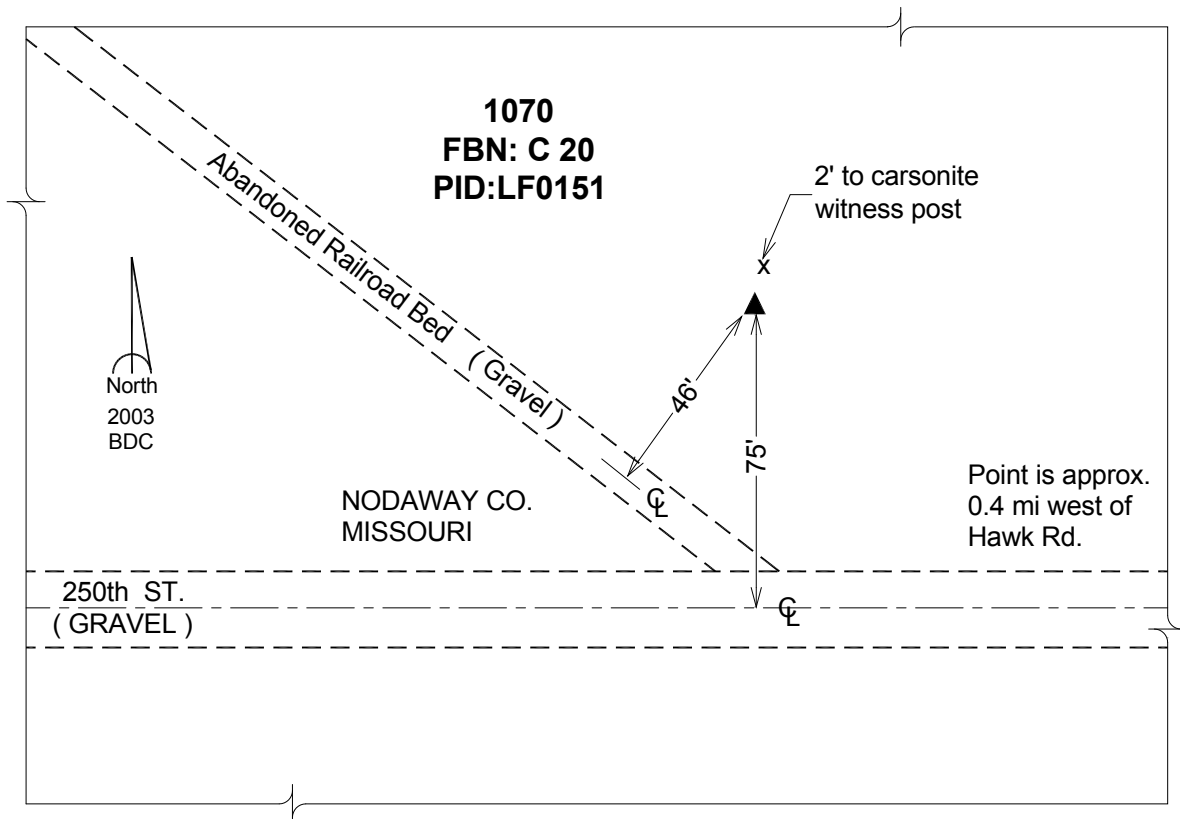
Latitude: **N40°21'40.10269"**

Longitude: **W94°55'10.31362"**

Mapping Angle: **-0°56'06"**

Combination Scale Factor: **1.000007557**

Monument Type: The station is a CGS bench mark disk stamped "C 20 1933" and set in the top of a concrete monument.



This document was prepared by DCI on 04-16-2013 for use by Page County, Iowa.