

**Palo Alto County, Iowa**  
Iowa North Zone (1401)  
Horiz. Datum: NAD83(1996)  
Vert. Datum: NAVD 1988  
US Survey Feet  
**2005**

Point Name: **411**

**Designation:** PA-0411 Palo Alto Co GPS Control Point (Set by Palo Alto Co. in 2004)

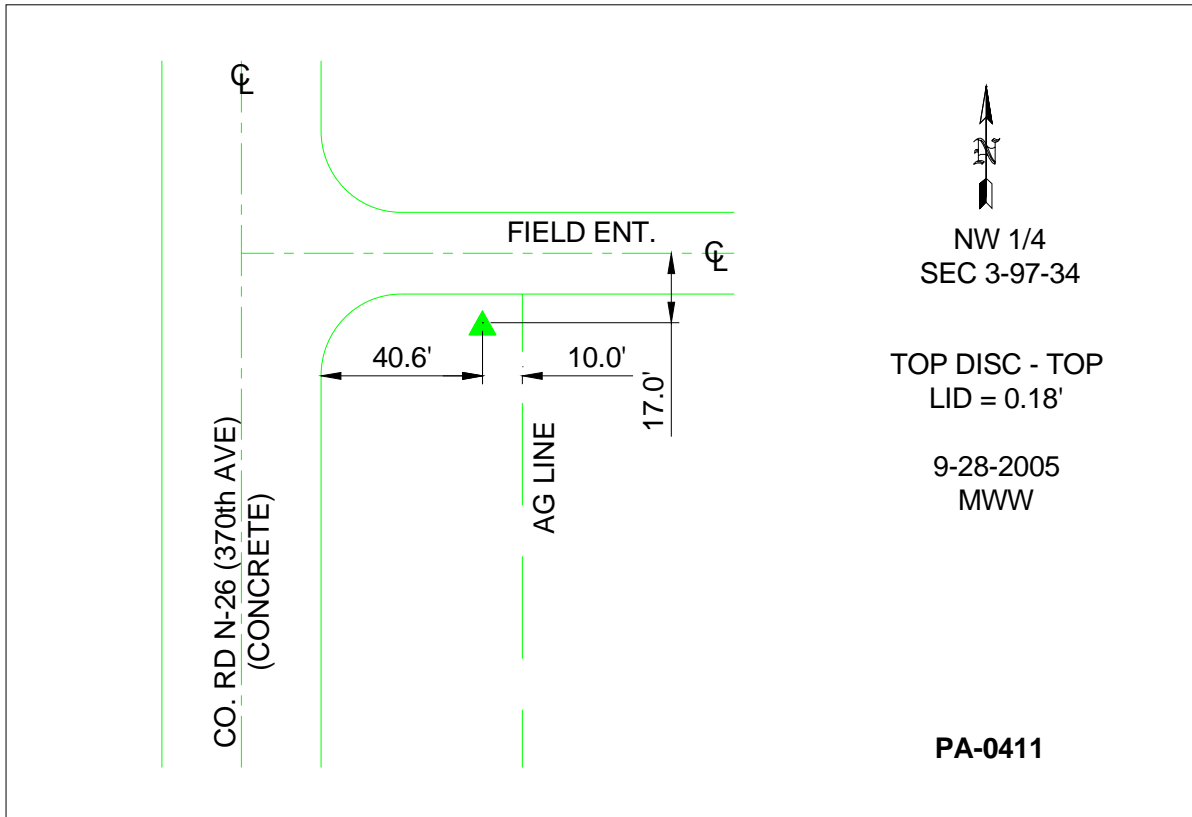
Northing: **3921539.82**sft Easting: **4559645.63**sft

Orthometric Height: **1517.67**sft Ellipsoid Height: **1423.87**sft **Geoid03**

Latitude: **43°15'00.40632"N** Longitude: **94°51'26.13416"W**

Mapping Angle: **-0°55'12"** Combination Scale Factor: **0.999929080**

**Monument Type:** Berntsen Top Security Rod Monument with a 3-1/4" dia. domed survey cap and permanent magnet encased in a 5"dia. PVC pipe with a NGS style aluminum access cover.



*This document was prepared by DCI and GBC for use by Palo Alto County, Iowa.*