

**Palo Alto County, Iowa**  
Iowa North Zone (1401)  
Horiz. Datum: NAD83(1996)  
Vert. Datum: NAVD 1988  
US Survey Feet  
**2005**

Point Name: **414**

**Designation:** PA-0414 Palo Alto Co GPS Control Point (Set by Palo Alto Co. in 2004)

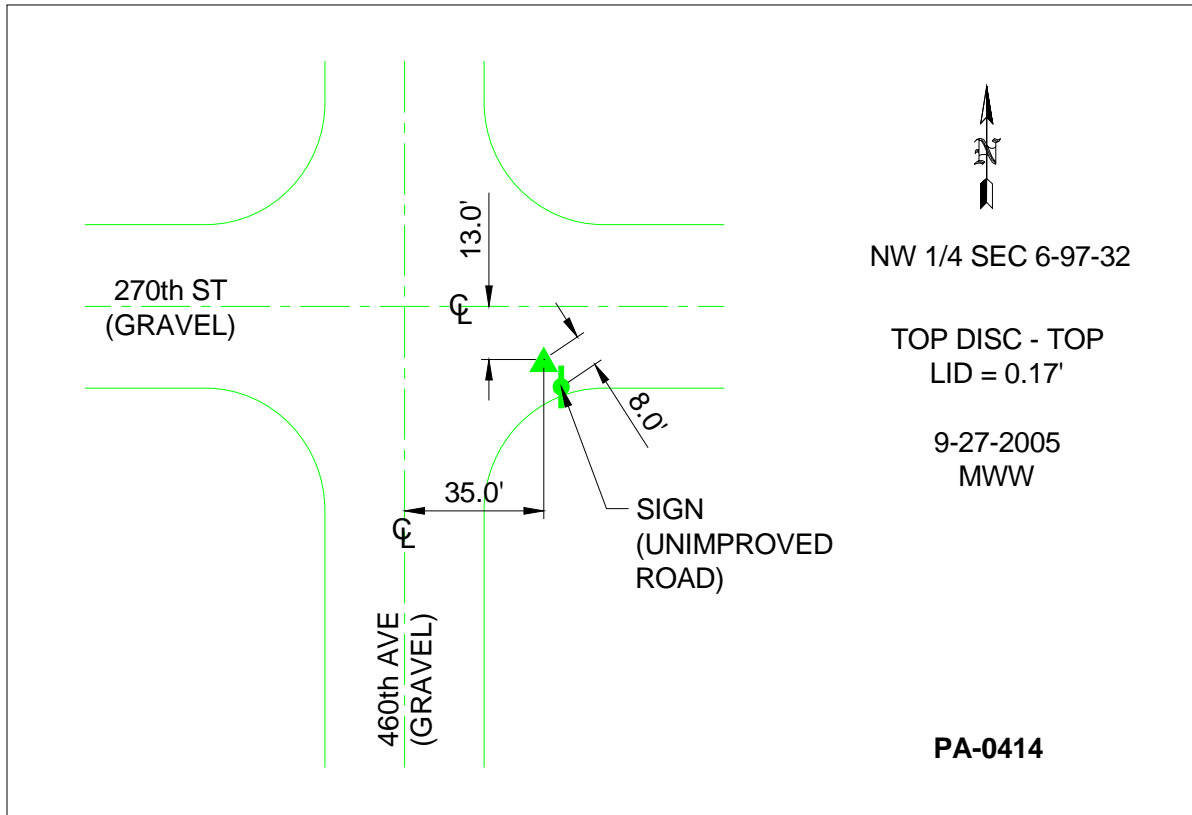
Northing: **3922701.18sft** Easting: **4607290.98sft**

Orthometric Height: **1299.53sft** Ellipsoid Height: **1205.83sft** **Geoid03**

Latitude: **43°15'18.93282"N** Longitude: **94°40'42.64066"W**

Mapping Angle: **-0°47'55"** Combination Scale Factor: **0.999940400**

**Monument Type:** Berntsen Top Security Rod Monument with a 3-1/4" dia. domed survey cap and permanent magnet encased in a 5"dia. PVC pipe with a NGS style aluminum access cover.



*This document was prepared by DCI and GBC for use by Palo Alto County, Iowa.*