

**Palo Alto County, Iowa**  
Iowa North Zone (1401)  
Horiz. Datum: NAD83(1996)  
Vert. Datum: NAVD 1988  
US Survey Feet  
**2005**

Point Name: **415**

**Designation:** PA-0415 Palo Alto Co GPS Control Point (Set by Palo Alto Co. in 2004)

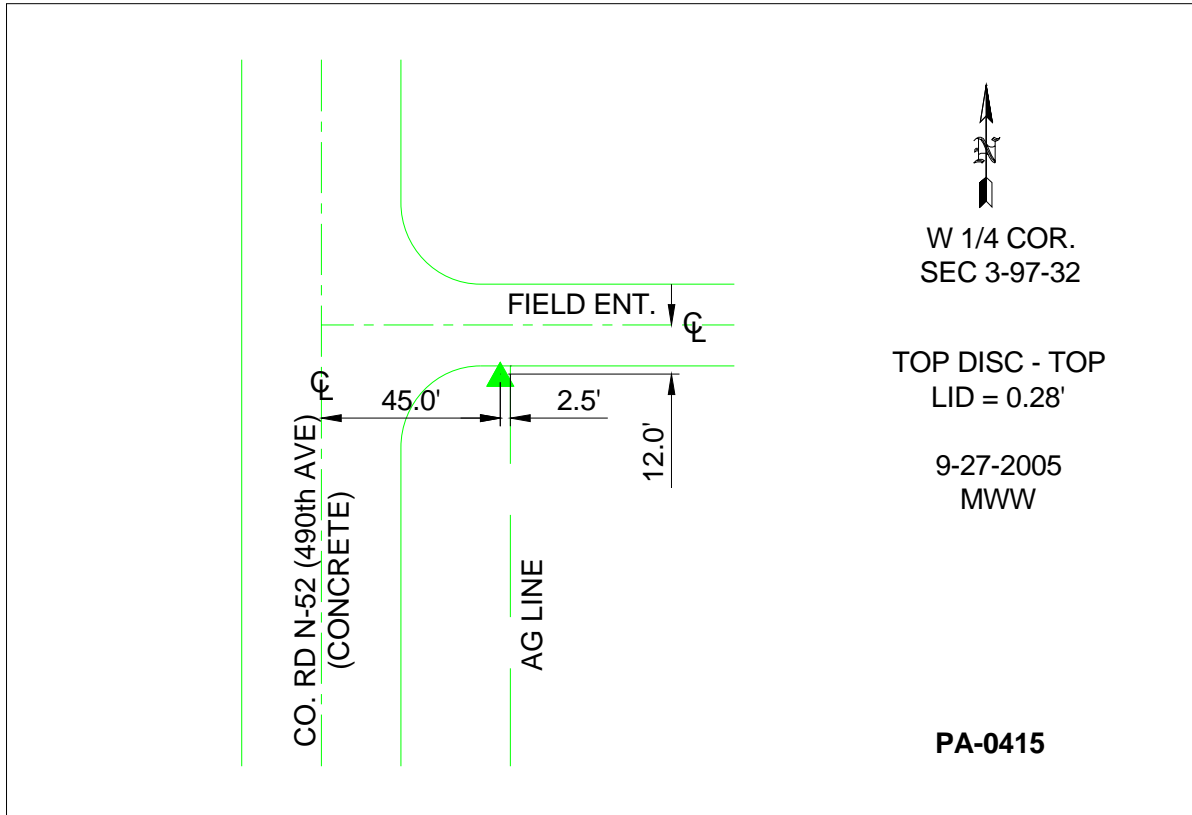
Northing: **3920044.88**sft Easting: **4622984.40**sft

Orthometric Height: **1296.18**sft Ellipsoid Height: **1202.58**sft **Geoid03**

Latitude: **43°14'54.80625"N** Longitude: **94°37'10.12000"W**

Mapping Angle: **-0°45'31"** Combination Scale Factor: **0.999939370**

**Monument Type:** Berntsen Top Security Rod Monument with a 3-1/4" dia. domed survey cap and permanent magnet encased in a 5"dia. PVC pipe with a NGS style aluminum access cover.



*This document was prepared by DCI and GBC for use by Palo Alto County, Iowa.*