

Palo Alto County, Iowa
Iowa North Zone (1401)
Horiz. Datum: NAD83(1996)
Vert. Datum: NAVD 1988
US Survey Feet
2005

Point Name: **417**

Designation: PA-0417 Palo Alto Co GPS Control Point (Set by Palo Alto Co. in 2004)

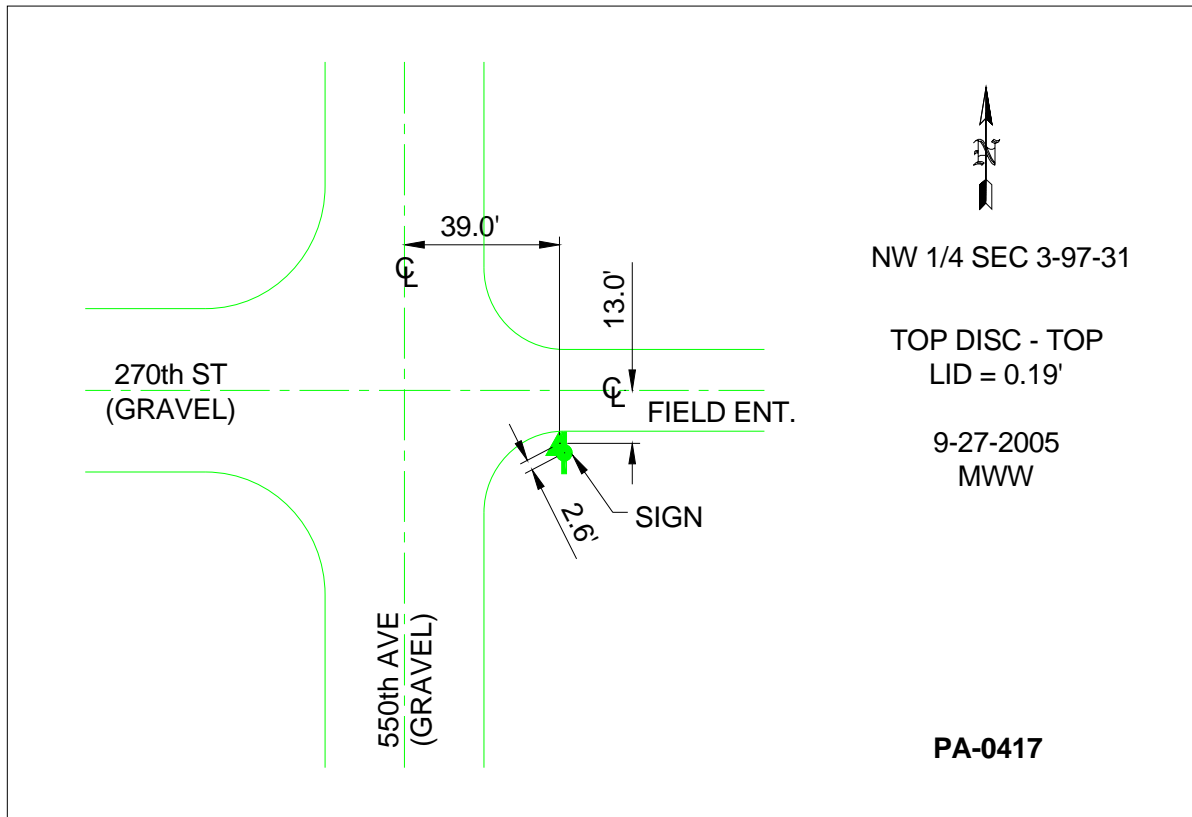
Northing: **3922011.46sft** Easting: **4654270.55sft**

Orthometric Height: **1278.65sft** Ellipsoid Height: **1185.19sft** **Geoid03**

Latitude: **43°15'18.10556"N** Longitude: **94°30'07.74317"W**

Mapping Angle: **-0°40'45"** Combination Scale Factor: **0.999941350**

Monument Type: Berntsen Top Security Rod Monument with a 3-1/4" dia. domed survey cap and permanent magnet encased in a 5"dia. PVC pipe with a NGS style aluminum access cover.



This document was prepared by DCI and GBC for use by Palo Alto County, Iowa.