

**Palo Alto County, Iowa**  
Iowa North Zone (1401)  
Horiz. Datum: NAD83(1996)  
Vert. Datum: NAVD 1988  
US Survey Feet  
**2005**

Point Name: **424**

**Designation:** PA-0424 Palo Alto Co GPS Control Point (Set by Palo Alto Co. in 2004)

Northing: **3907195.01**sft Easting: **4607033.36**sft

Orthometric Height: **1296.54**sft Ellipsoid Height: **1202.72**sft **Geoid03**

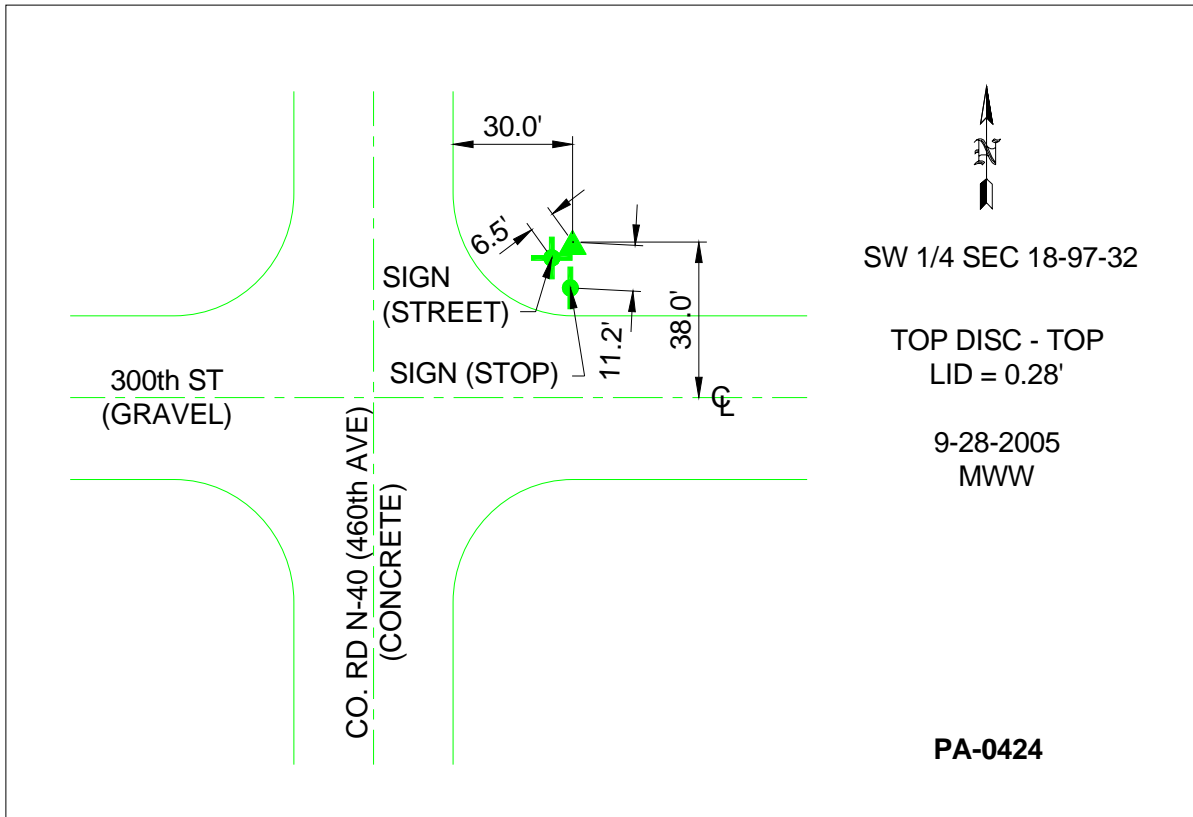
Latitude: **43°12'45.76054"N**

Longitude: **94°40'43.20029"W**

Mapping Angle: **-0°47'56"**

Combination Scale Factor: **0.999933210**

**Monument Type:** Berntsen Top Security Rod Monument with a 3-1/4" dia. domed survey cap and permanent magnet encased in a 5"dia. PVC pipe with a NGS style aluminum access cover.



*This document was prepared by DCI and GBC for use by Palo Alto County, Iowa.*