

**Palo Alto County, Iowa**  
Iowa North Zone (1401)  
Horiz. Datum: NAD83(1996)  
Vert. Datum: NAVD 1988  
US Survey Feet  
**2005**

Point Name: **426**

**Designation:** PA-0426 Palo Alto Co GPS Control Point (Set by Palo Alto Co. in 2004)

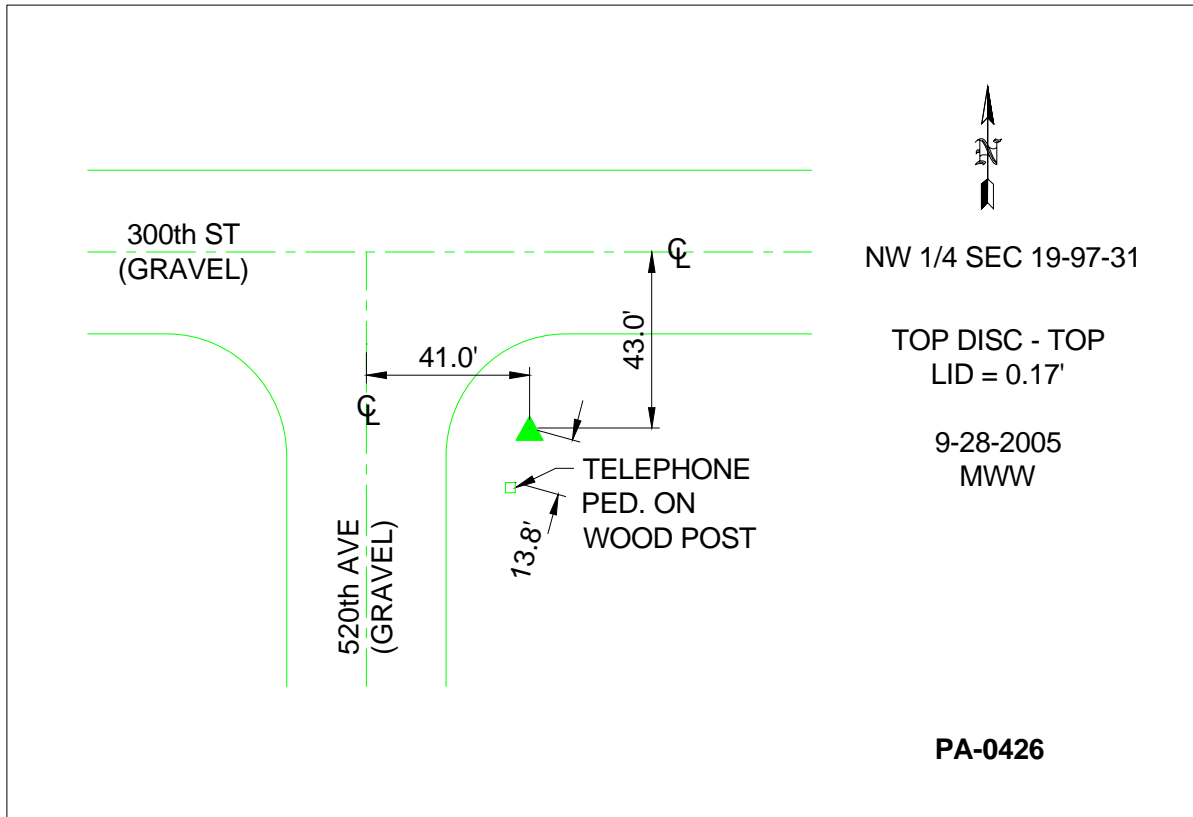
Northing: **3906667.43sft** Easting: **4638544.92sft**

Orthometric Height: **1295.48sft** Ellipsoid Height: **1201.88sft** **Geoid03**

Latitude: **43°12'44.67177"N** Longitude: **94°33'37.62408"W**

Mapping Angle: **-0°43'07"** Combination Scale Factor: **0.999933200**

**Monument Type:** Berntsen Top Security Rod Monument with a 3-1/4" dia. domed survey cap and permanent magnet encased in a 5"dia. PVC pipe with a NGS style aluminum access cover.



*This document was prepared by DCI and GBC for use by Palo Alto County, Iowa.*