

**Palo Alto County, Iowa**  
Iowa North Zone (1401)  
Horiz. Datum: NAD83(1996)  
Vert. Datum: NAVD 1988  
US Survey Feet  
**2005**

Point Name: **431**

**Designation:** PA-0431 Palo Alto Co GPS Control Point (Set by Palo Alto Co. in 2004)

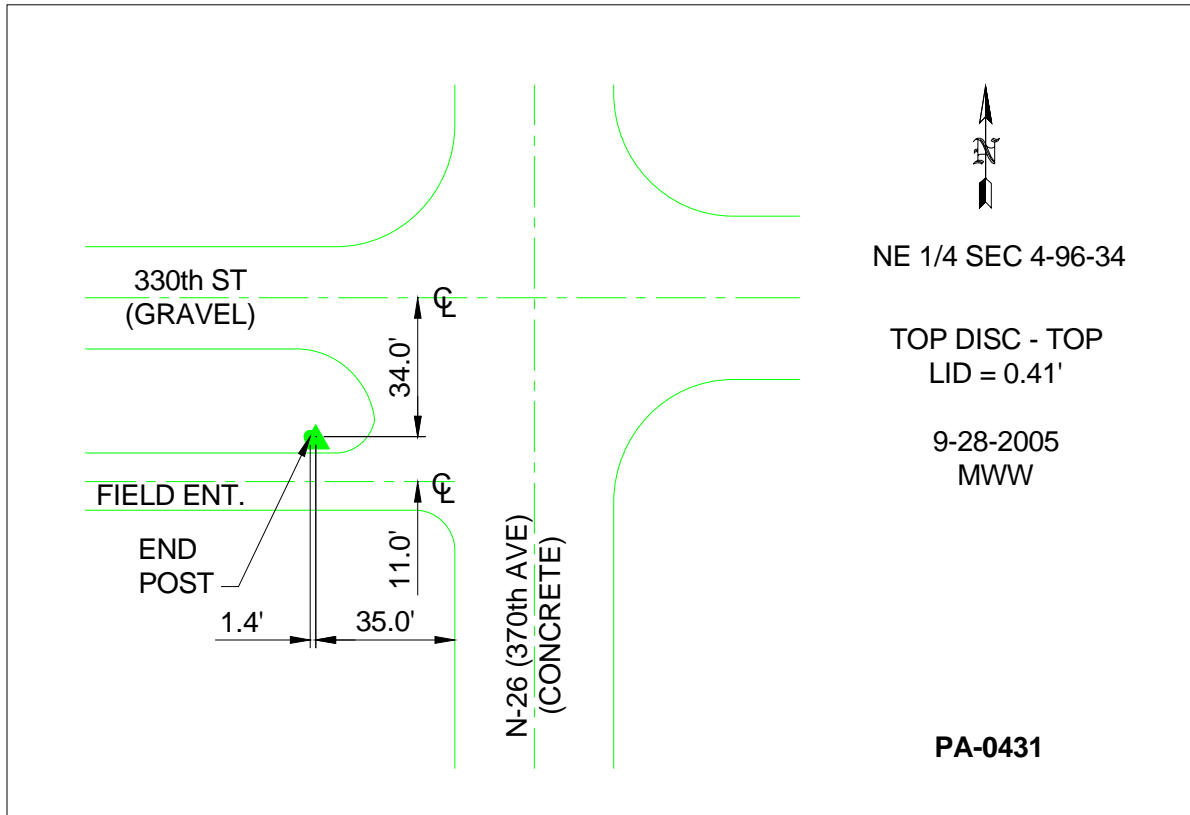
Northing: **3891976.81**sft Easting: **4559425.02**sft

Orthometric Height: **1393.97**sft Ellipsoid Height: **1299.78**sft **Geoid03**

Latitude: **43°10'08.41780"N** Longitude: **94°51'22.70618"W**

Mapping Angle: **-0°55'09"** Combination Scale Factor: **0.999921610**

**Monument Type:** Berntsen Top Security Rod Monument with a 3-1/4" dia. domed survey cap and permanent magnet encased in a 5"dia. PVC pipe with a NGS style aluminum access cover.



*This document was prepared by DCI and GBC for use by Palo Alto County, Iowa.*