

Palo Alto County, Iowa
Iowa North Zone (1401)
Horiz. Datum: NAD83(1996)
Vert. Datum: NAVD 1988
US Survey Feet
2005

Point Name: **434**

Designation: PA-0434 Palo Alto Co GPS Control Point (Set by Palo Alto Co. in 2004)

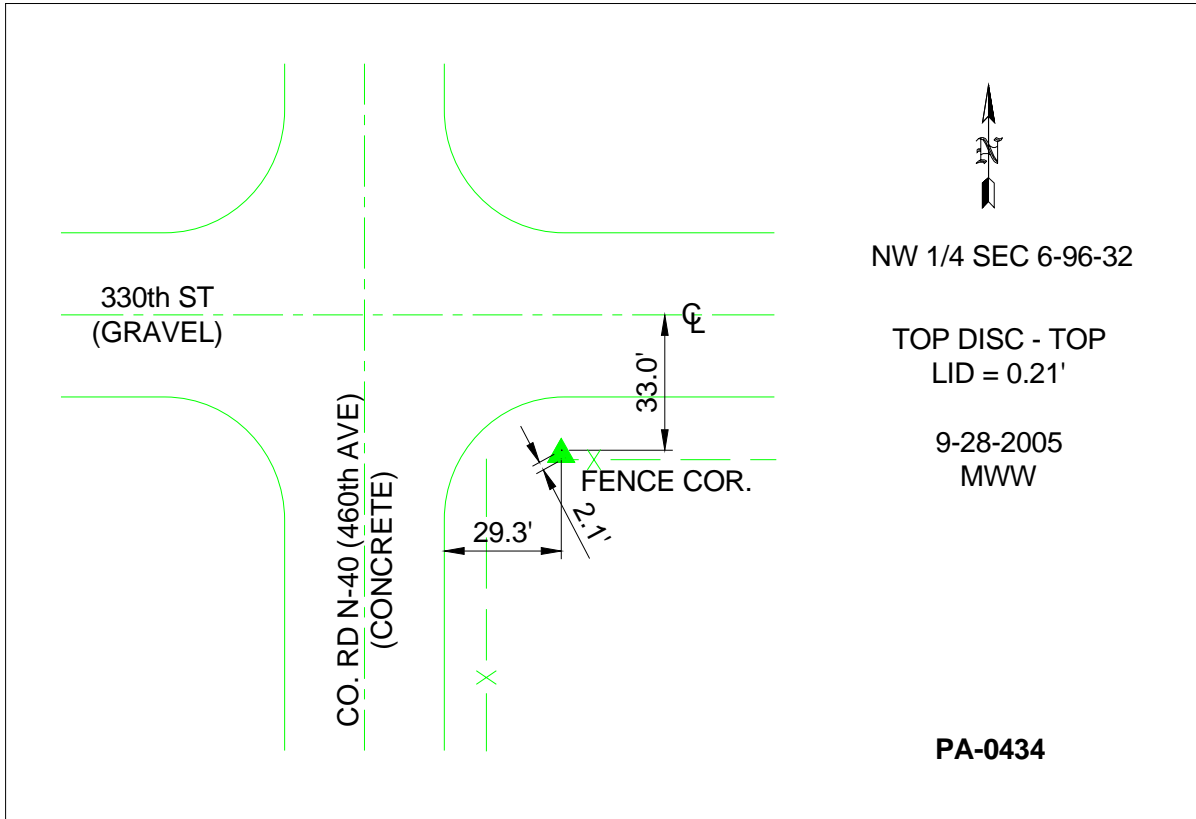
Northing: **3891303.33**sft Easting: **4606839.98**sft

Orthometric Height: **1240.80**sft Ellipsoid Height: **1146.88**sft **Geoid03**

Latitude: **43°10'08.78754"N** Longitude: **94°40'42.81983"W**

Mapping Angle: **-0°47'56"** Combination Scale Factor: **0.999928920**

Monument Type: Berntsen Top Security Rod Monument with a 3-1/4" dia. domed survey cap and permanent magnet encased in a 5"dia. PVC pipe with a NGS style aluminum access cover.



This document was prepared by DCI and GBC for use by Palo Alto County, Iowa.