

**Palo Alto County, Iowa**  
Iowa North Zone (1401)  
Horiz. Datum: NAD83(1996)  
Vert. Datum: NAVD 1988  
US Survey Feet  
**2005**

Point Name: **435**

**Designation:** PA-0435 Palo Alto Co GPS Control Point (Set by Palo Alto Co. in 2004)

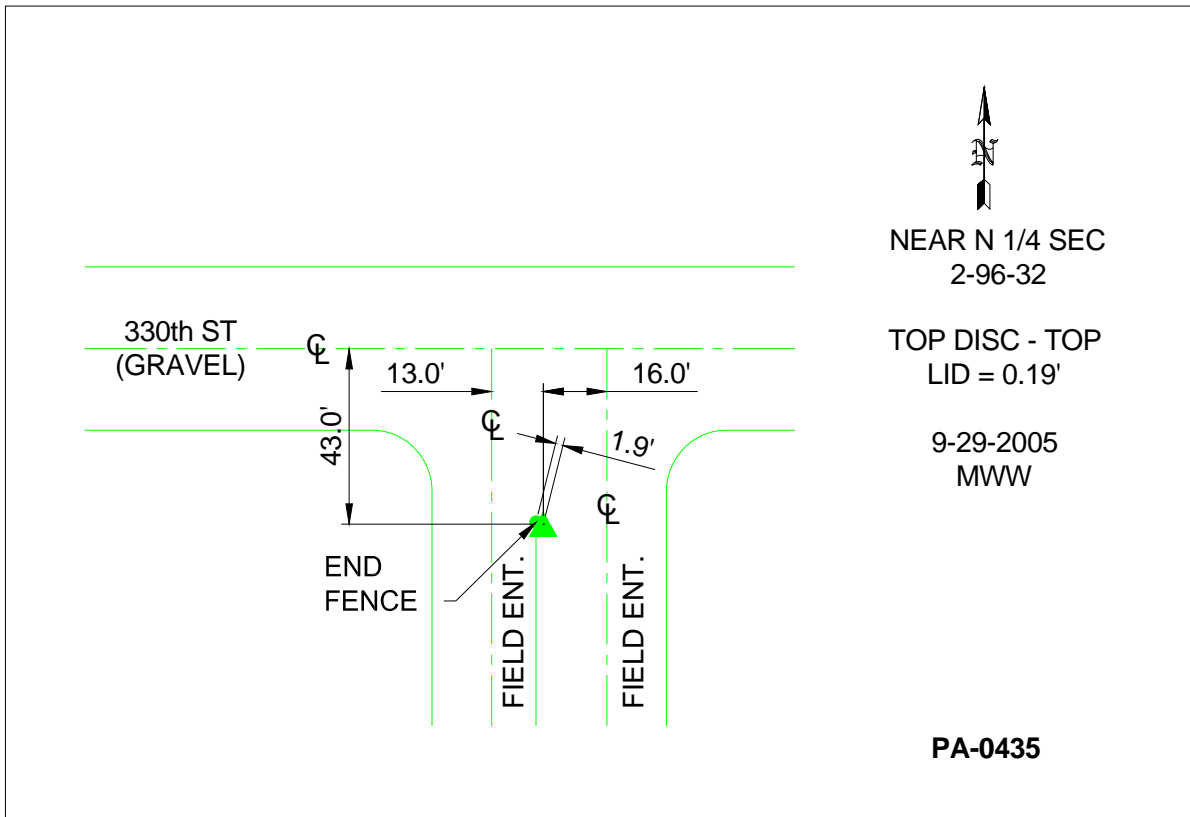
Northing: **3891036.74sft** Easting: **4627804.42sft**

Orthometric Height: **1262.12sft** Ellipsoid Height: **1168.37sft** **Geoid03**

Latitude: **43°10'08.94506"N** Longitude: **94°35'59.90044"W**

Mapping Angle: **-0°44'44"** Combination Scale Factor: **0.999927900**

**Monument Type:** Berntsen Top Security Rod Monument with a 3-1/4" dia. domed survey cap and permanent magnet encased in a 5"dia. PVC pipe with a NGS style aluminum access cover.



*This document was prepared by DCI and GBC for use by Palo Alto County, Iowa.*