

Palo Alto County, Iowa
Iowa North Zone (1401)
Horiz. Datum: NAD83(1996)
Vert. Datum: NAVD 1988
US Survey Feet
2005

Point Name: **437**

Designation: PA-0437 Palo Alto Co GPS Control Point (Set by Palo Alto Co. in 2004)

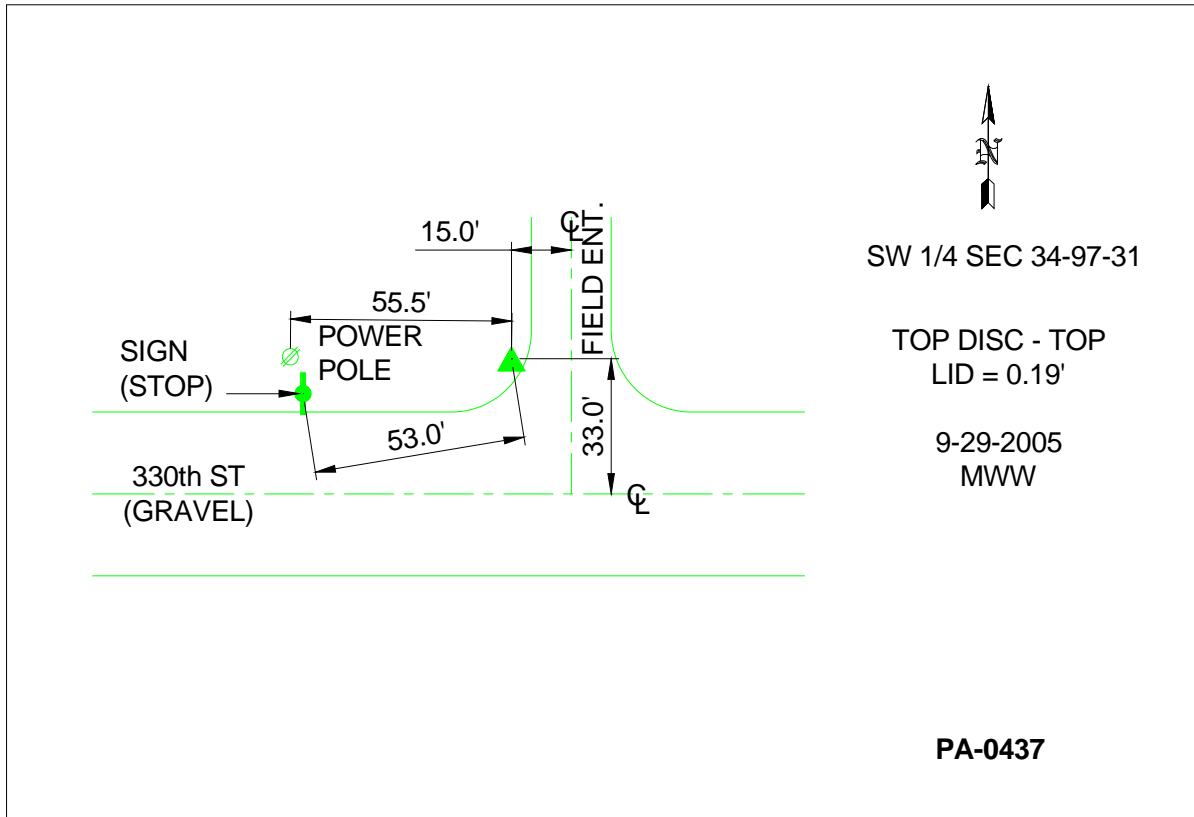
Northing: **3890776.78**sft Easting: **4654059.19**sft

Orthometric Height: **1301.99**sft Ellipsoid Height: **1208.33**sft **Geoid03**

Latitude: **43°10'09.60070"N** Longitude: **94°30'05.59884"W**

Mapping Angle: **-0°40'44"** Combination Scale Factor: **0.999926020**

Monument Type: Berntsen Top Security Rod Monument with a 3-1/4" dia. domed survey cap and permanent magnet encased in a 5"dia. PVC pipe with a NGS style aluminum access cover.



This document was prepared by DCI and GBC for use by Palo Alto County, Iowa.