

Palo Alto County, Iowa
Iowa North Zone (1401)
Horiz. Datum: NAD83(1996)
Vert. Datum: NAVD 1988
US Survey Feet
2005

Point Name: **438**

Designation: PA-0438 Palo Alto Co GPS Control Point (Set by Palo Alto Co. in 2004)

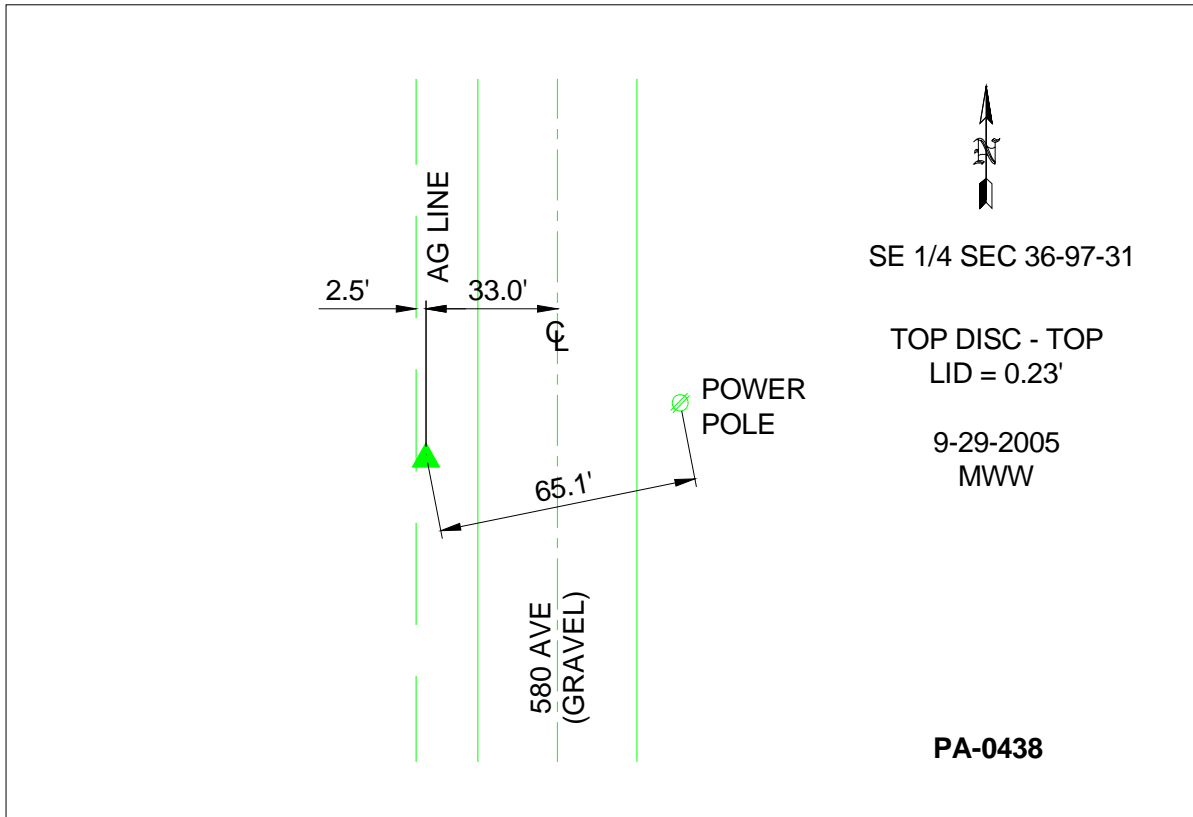
Northing: **3891291.28sft** Easting: **4669722.25sft**

Orthometric Height: **1267.22sft** Ellipsoid Height: **1173.50sft** **Geoid03**

Latitude: **43°10'16.46114"N** Longitude: **94°26'34.32958"W**

Mapping Angle: **-0°38'20"** Combination Scale Factor: **0.999927970**

Monument Type: Berntsen Top Security Rod Monument with a 3-1/4" dia. domed survey cap and permanent magnet encased in a 5"dia. PVC pipe with a NGS style aluminum access cover.



This document was prepared by DCI and GBC for use by Palo Alto County, Iowa.