

Palo Alto County, Iowa
Iowa North Zone (1401)
Horiz. Datum: NAD83(1996)
Vert. Datum: NAVD 1988
US Survey Feet
2005

Point Name: **441**

Designation: PA-0441 Palo Alto Co GPS Control Point (Set by Palo Alto Co. in 2004)

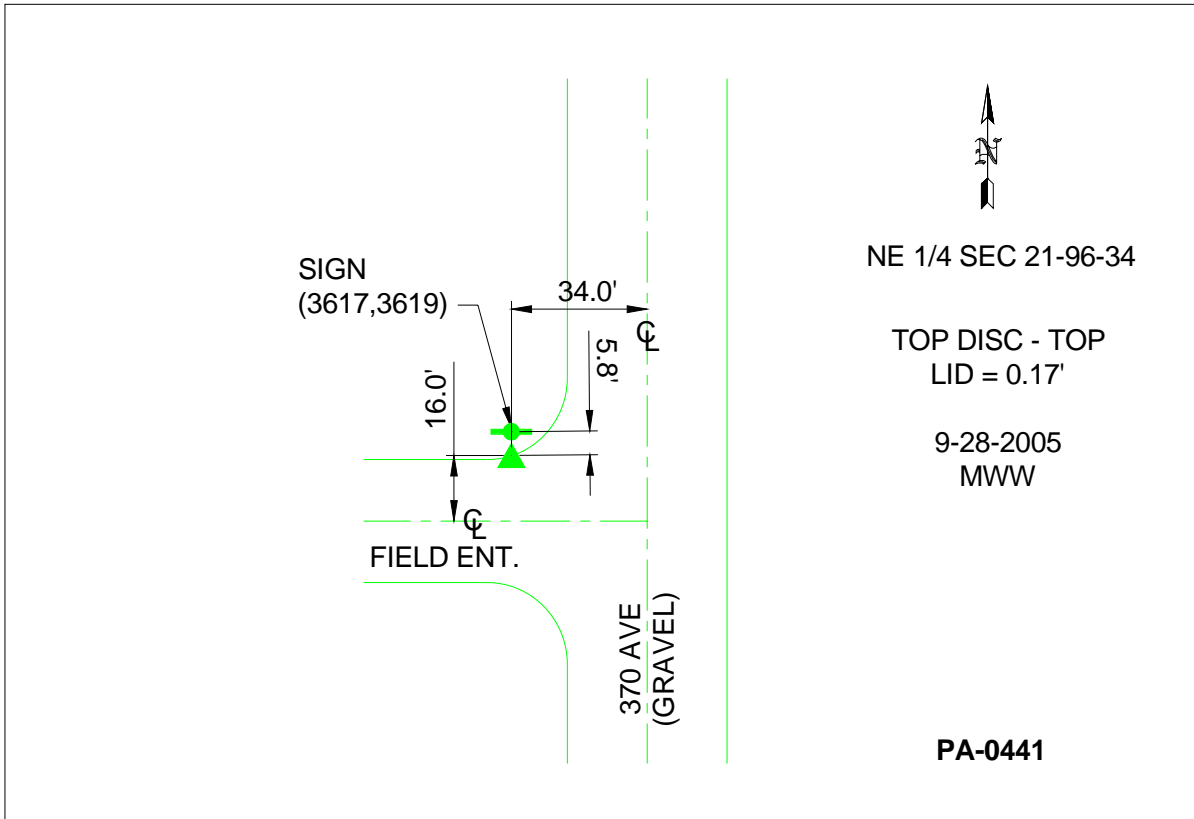
Northing: **3875432.34sft** Easting: **4559069.29sft**

Orthometric Height: **1450.44sft** Ellipsoid Height: **1356.14sft** **Geoid03**

Latitude: **43°07'24.97083"N** Longitude: **94°51'23.92335"W**

Mapping Angle: **-0°55'10"** Combination Scale Factor: **0.999912290**

Monument Type: Berntsen Top Security Rod Monument with a 3-1/4" dia. domed survey cap and permanent magnet encased in a 5"dia. PVC pipe with a NGS style aluminum access cover.



This document was prepared by DCI and GBC for use by Palo Alto County, Iowa.