

Palo Alto County, Iowa
Iowa North Zone (1401)
Horiz. Datum: NAD83(1996)
Vert. Datum: NAVD 1988
US Survey Feet
2005

Point Name: **442**

Designation: PA-0442 Palo Alto Co GPS Control Point (Set by Palo Alto Co. in 2004)

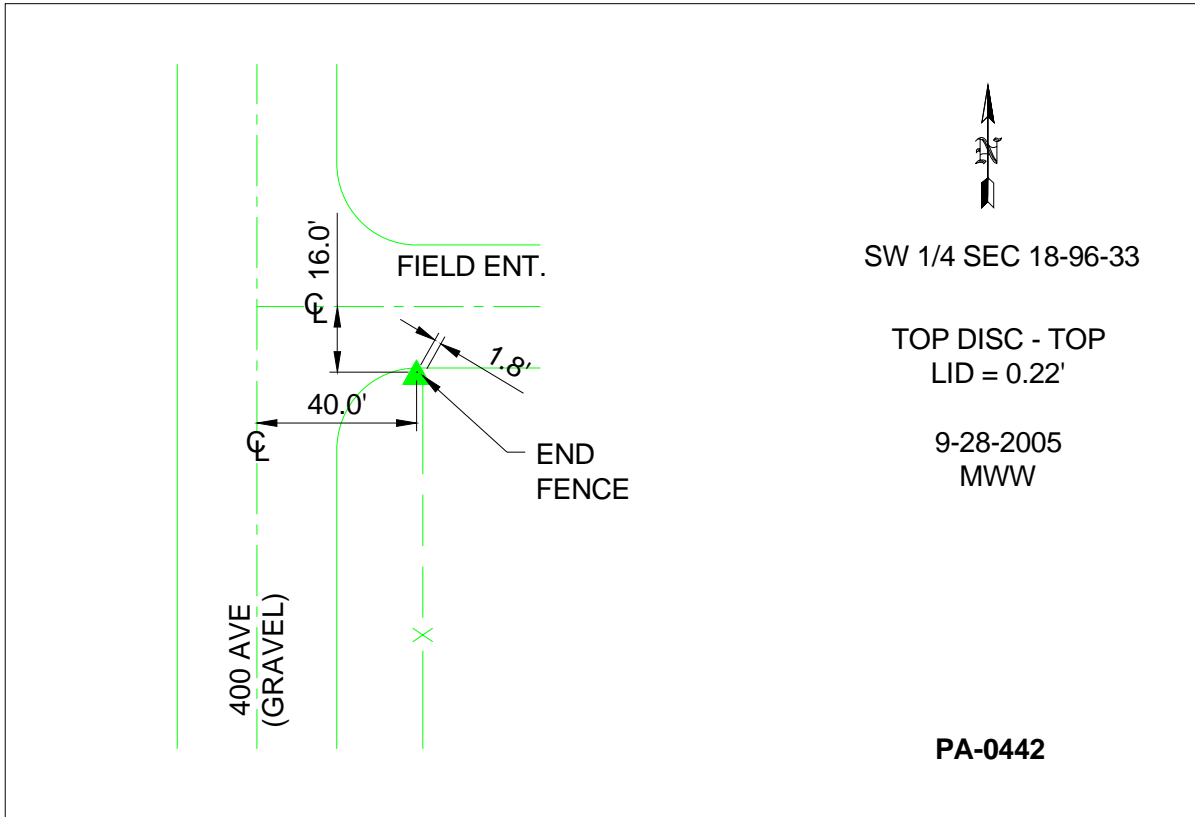
Northing: **3876434.84**sft Easting: **4575037.30**sft

Orthometric Height: **1293.08**sft Ellipsoid Height: **1198.82**sft **Geoid03**

Latitude: **43°07'37.34669"N** Longitude: **94°47'48.84038"W**

Mapping Angle: **-0°52'44"** Combination Scale Factor: **0.999920280**

Monument Type: Berntsen Top Security Rod Monument with a 3-1/4" dia. domed survey cap and permanent magnet encased in a 5"dia. PVC pipe with a NGS style aluminum access cover.



This document was prepared by DCI and GBC for use by Palo Alto County, Iowa.