

**Palo Alto County, Iowa**  
Iowa North Zone (1401)  
Horiz. Datum: NAD83(1996)  
Vert. Datum: NAVD 1988  
US Survey Feet  
**2005**

Point Name: **446**

**Designation:** PA-0446 Palo Alto Co GPS Control Point (Set by Palo Alto Co. in 2004)

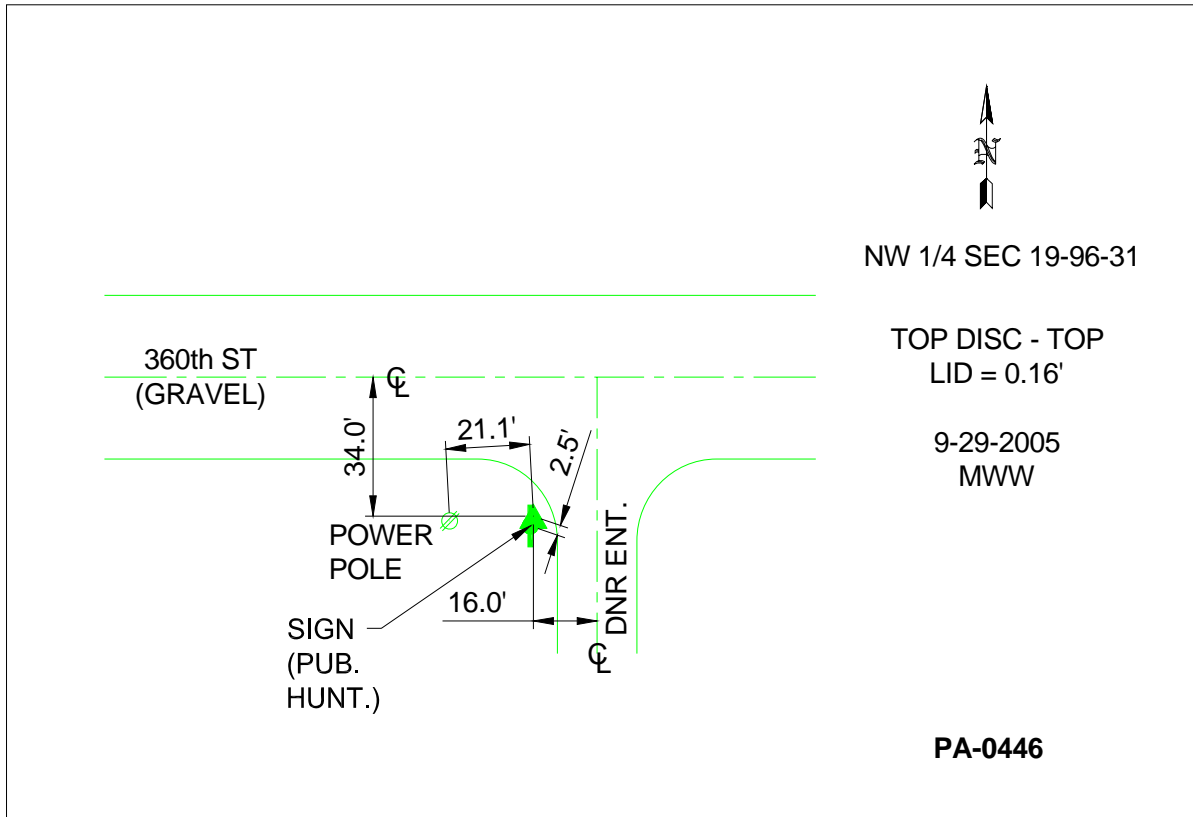
Northing: **3875235.87**sft Easting: **4639467.23**sft

Orthometric Height: **1210.58**sft Ellipsoid Height: **1116.81**sft **Geoid03**

Latitude: **43°07'34.35927"N** Longitude: **94°33'19.87138"W**

Mapping Angle: **-0°42'55"** Combination Scale Factor: **0.999924080**

**Monument Type:** Berntsen Top Security Rod Monument with a 3-1/4" dia. domed survey cap and permanent magnet encased in a 5"dia. PVC pipe with a NGS style aluminum access cover.



*This document was prepared by DCI and GBC for use by Palo Alto County, Iowa.*