

Palo Alto County, Iowa
Iowa North Zone (1401)
Horiz. Datum: NAD83(1996)
Vert. Datum: NAVD 1988
US Survey Feet
2005

Point Name: **452**

Designation: PA-0452 Palo Alto Co GPS Control Point (Set by Palo Alto Co. in 2004)

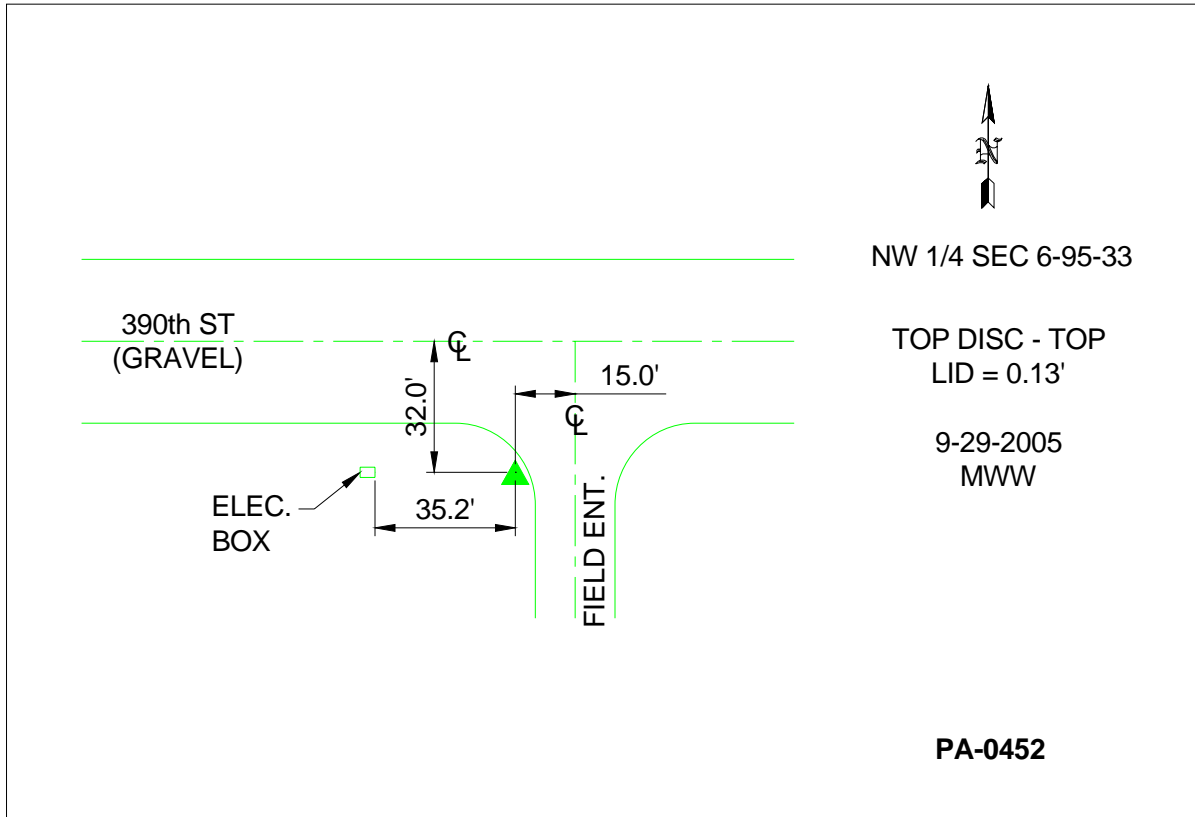
Northing: **3860357.72**sft Easting: **4576402.07**sft

Orthometric Height: **1271.60**sft Ellipsoid Height: **1177.28**sft **Geoid03**

Latitude: **43°04'58.77399"N** Longitude: **94°47'27.12835"W**

Mapping Angle: **-0°52'30"** Combination Scale Factor: **0.999915440**

Monument Type: Berntsen Top Security Rod Monument with a 3-1/4" dia. domed survey cap and permanent magnet encased in a 5"dia. PVC pipe with a NGS style aluminum access cover.



This document was prepared by DCI and GBC for use by Palo Alto County, Iowa.