

**Palo Alto County, Iowa**  
Iowa North Zone (1401)  
Horiz. Datum: NAD83(1996)  
Vert. Datum: NAVD 1988  
US Survey Feet  
**2005**

Point Name: **453**

**Designation:** PA-0453 Palo Alto Co GPS Control Point (Set by Palo Alto Co. in 2004)

Northing: **3860214.68sft** Easting: **4590514.59sft**

Orthometric Height: **1229.36sft** Ellipsoid Height: **1135.15sft** **Geoid03**

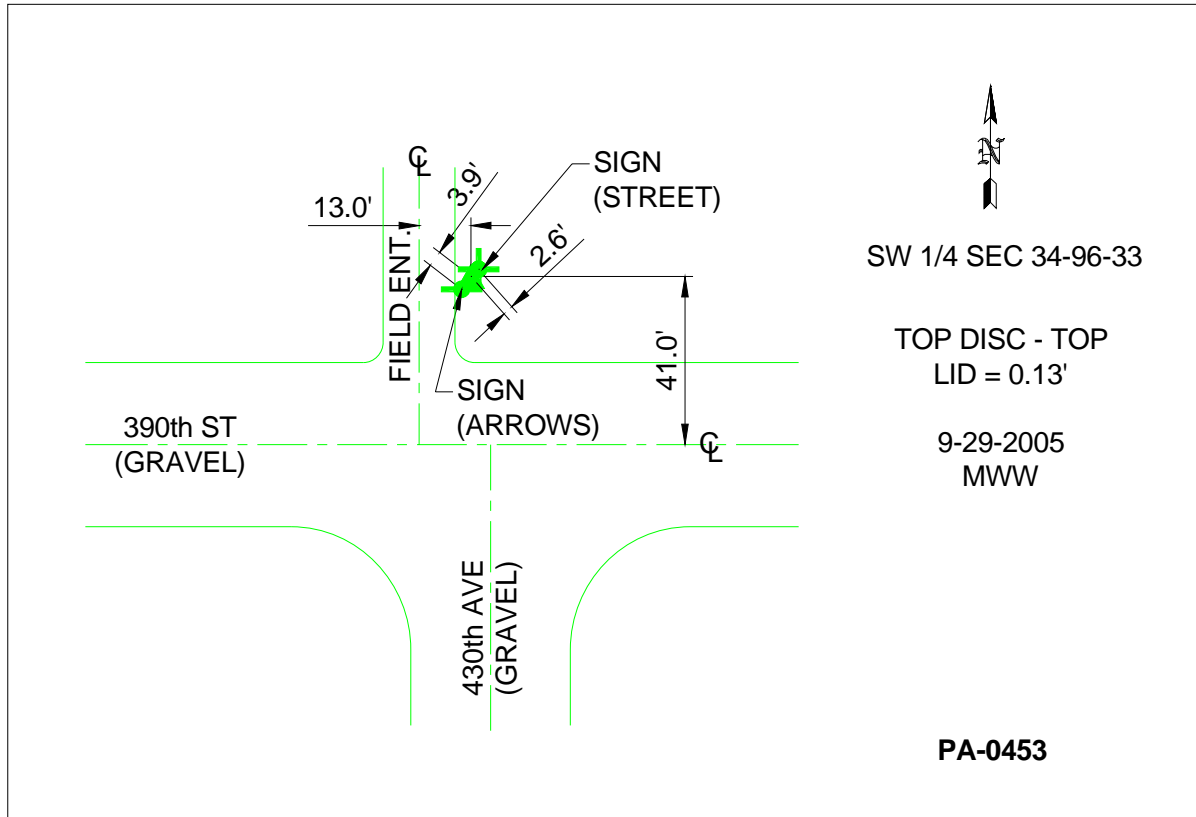
Latitude: **43°04'59.44616"N**

Longitude: **94°44'16.94929"W**

Mapping Angle: **-0°50'21"**

Combination Scale Factor: **0.999917470**

**Monument Type:** Berntsen Top Security Rod Monument with a 3-1/4" dia. domed survey cap and permanent magnet encased in a 5"dia. PVC pipe with a NGS style aluminum access cover.



*This document was prepared by DCI and GBC for use by Palo Alto County, Iowa.*