

**Palo Alto County, Iowa**  
Iowa North Zone (1401)  
Horiz. Datum: NAD83(1996)  
Vert. Datum: NAVD 1988  
US Survey Feet  
**2005**

Point Name: **457**

**Designation:** PA-0457 Palo Alto Co GPS Control Point (Set by Palo Alto Co. in 2004)

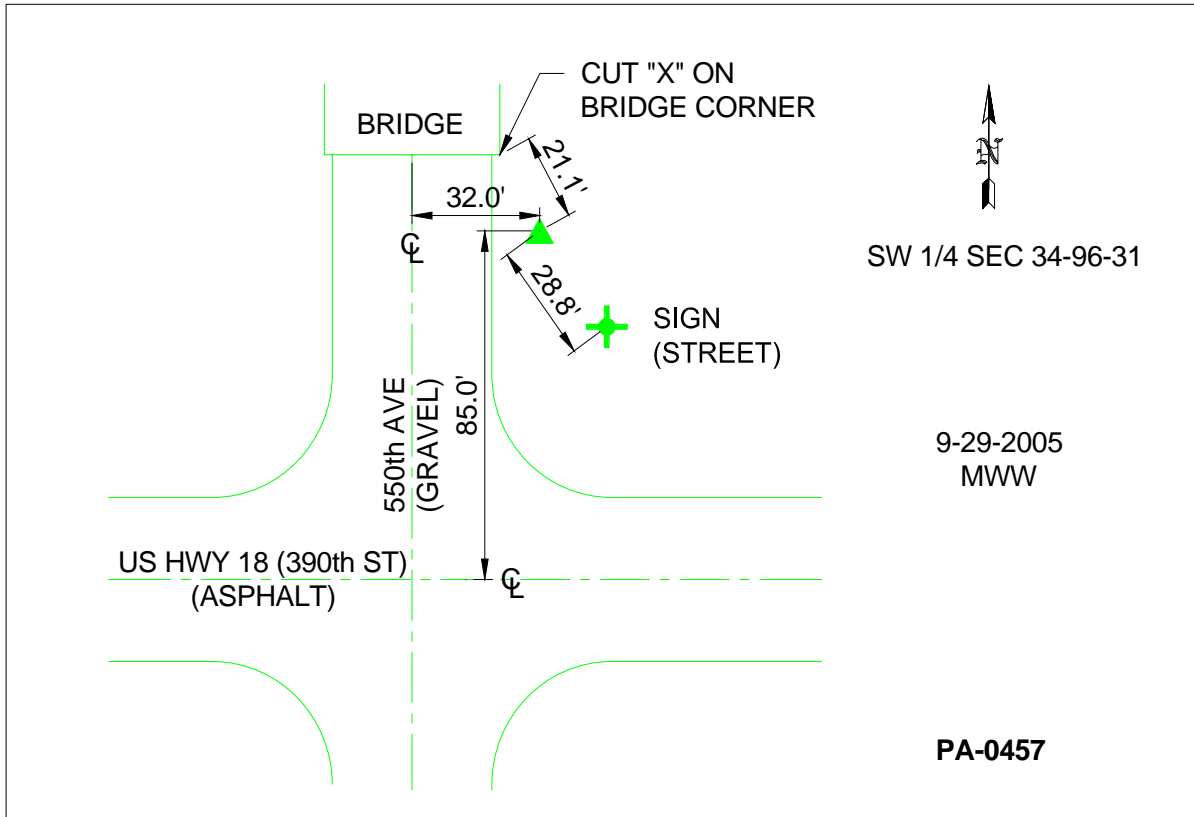
Northing: **3859375.71**sft Easting: **4653690.23**sft

Orthometric Height: **1185.26**sft Ellipsoid Height: **1091.40**sft **Geoid03**

Latitude: **43°04'59.42536"N** Longitude: **94°30'05.55732"W**

Mapping Angle: **-0°40'44"** Combination Scale Factor: **0.999919560**

**Monument Type:** Berntsen Top Security Rod Monument with a 3-1/4" dia. domed survey cap and permanent magnet encased in a 5"dia. PVC pipe with a NGS style aluminum access cover.



*This document was prepared by DCI and GBC for use by Palo Alto County, Iowa.*