

Palo Alto County, Iowa
Iowa North Zone (1401)
Horiz. Datum: NAD83(1996)
Vert. Datum: NAVD 1988
US Survey Feet
2005

Point Name: **466**

Designation: PA-0466 Palo Alto Co GPS Control Point (Set by Palo Alto Co. in 2004)

Northing: **3847241.31**sft Easting: **4641654.93**sft

Orthometric Height: **1182.71**sft Ellipsoid Height: **1088.79**sft **Geoid03**

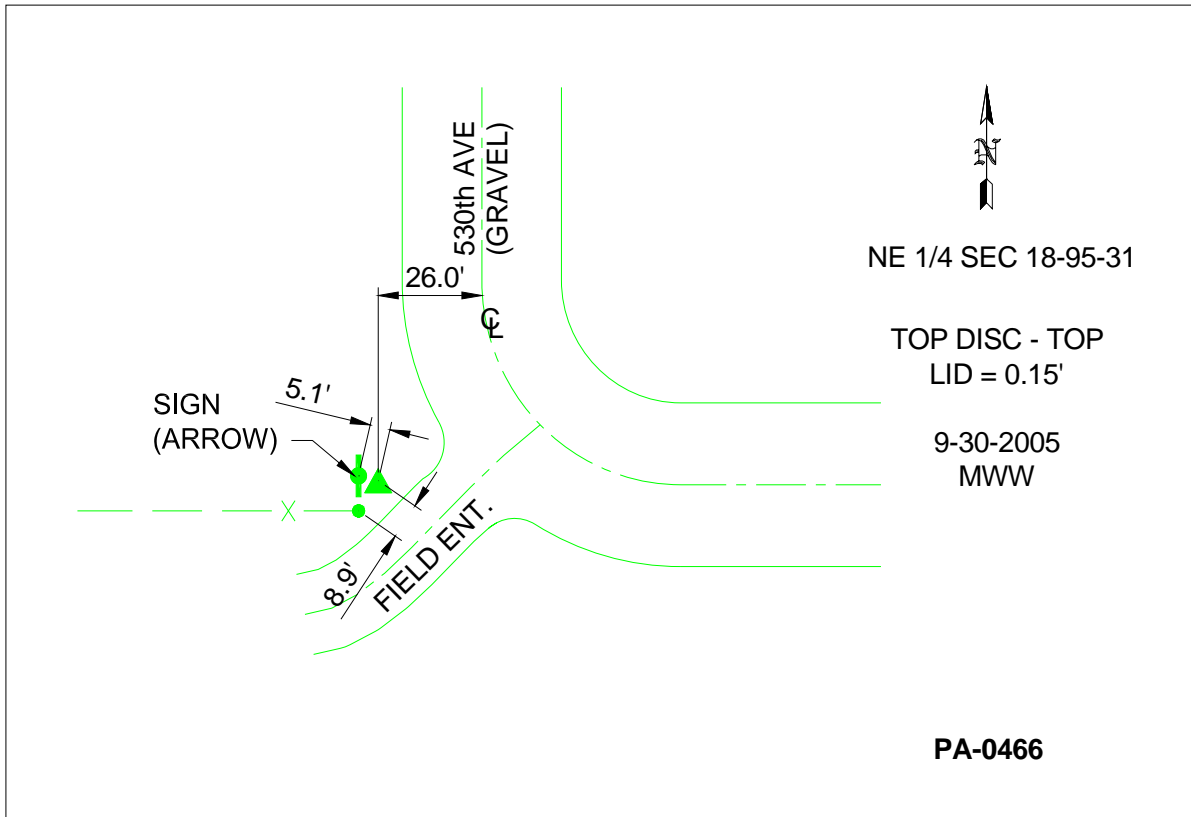
Latitude: **43°02'58.13870"N**

Longitude: **94°32'45.70219"W**

Mapping Angle: **-0°42'32"**

Combination Scale Factor: **0.999915590**

Monument Type: Berntsen Top Security Rod Monument with a 3-1/4" dia. domed survey cap and permanent magnet encased in a 5"dia. PVC pipe with a NGS style aluminum access cover.



This document was prepared by DCI and GBC for use by Palo Alto County, Iowa.