

Palo Alto County, Iowa
Iowa North Zone (1401)
Horiz. Datum: NAD83(1996)
Vert. Datum: NAVD 1988
US Survey Feet
2005

Point Name: **471**

Designation: PA-0471 Palo Alto Co GPS Control Point (Set by Palo Alto Co. in 2004)

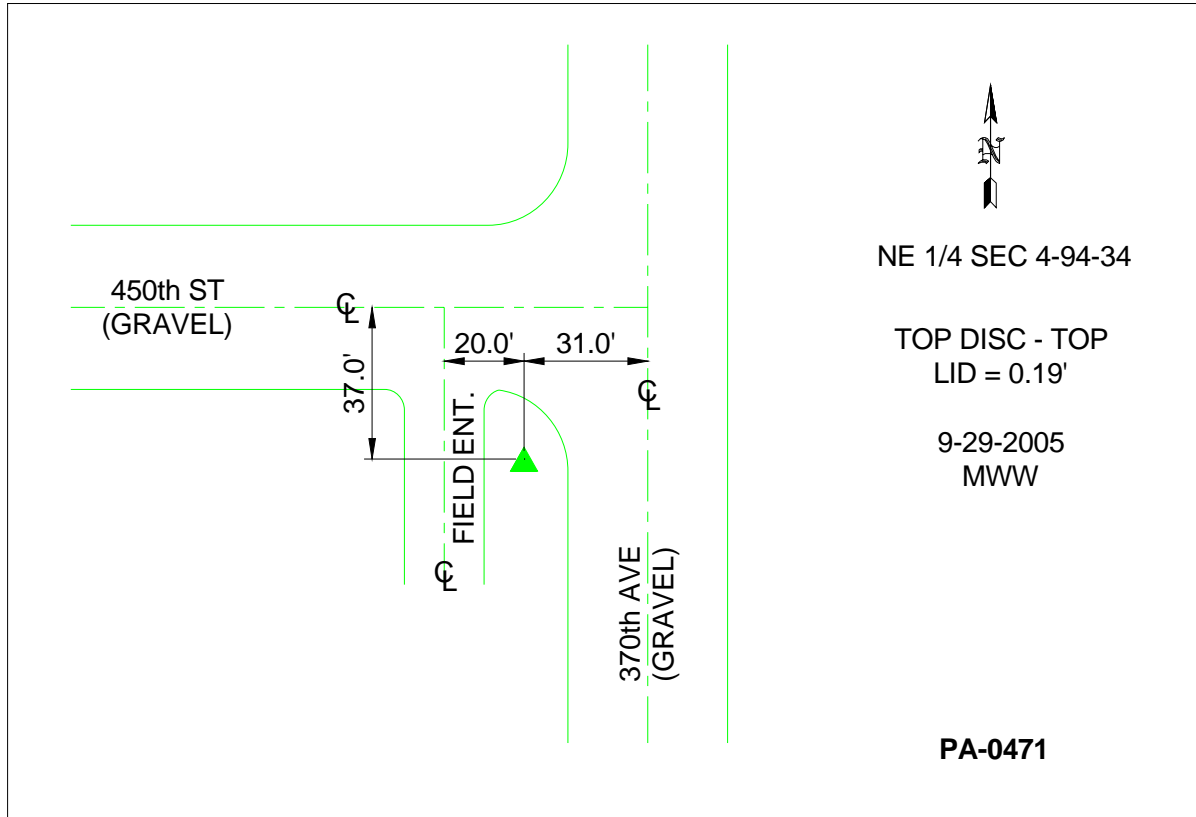
Northing: **3828673.90**sft Easting: **4558473.48**sft

Orthometric Height: **1343.36**sft Ellipsoid Height: **1248.98**sft **Geoid03**

Latitude: **42°59'43.08519"N** Longitude: **94°51'21.84304"W**

Mapping Angle: **-0°55'09"** Combination Scale Factor: **0.999902100**

Monument Type: Berntsen Top Security Rod Monument with a 3-1/4" dia. domed survey cap and permanent magnet encased in a 5"dia. PVC pipe with a NGS style aluminum access cover.



This document was prepared by DCI and GBC for use by Palo Alto County, Iowa.