

Palo Alto County, Iowa
Iowa North Zone (1401)
Horiz. Datum: NAD83(1996)
Vert. Datum: NAVD 1988
US Survey Feet
2005

Point Name: **473**

Designation: PA-0473 Palo Alto Co GPS Control Point (Set by Palo Alto Co. in 2004)

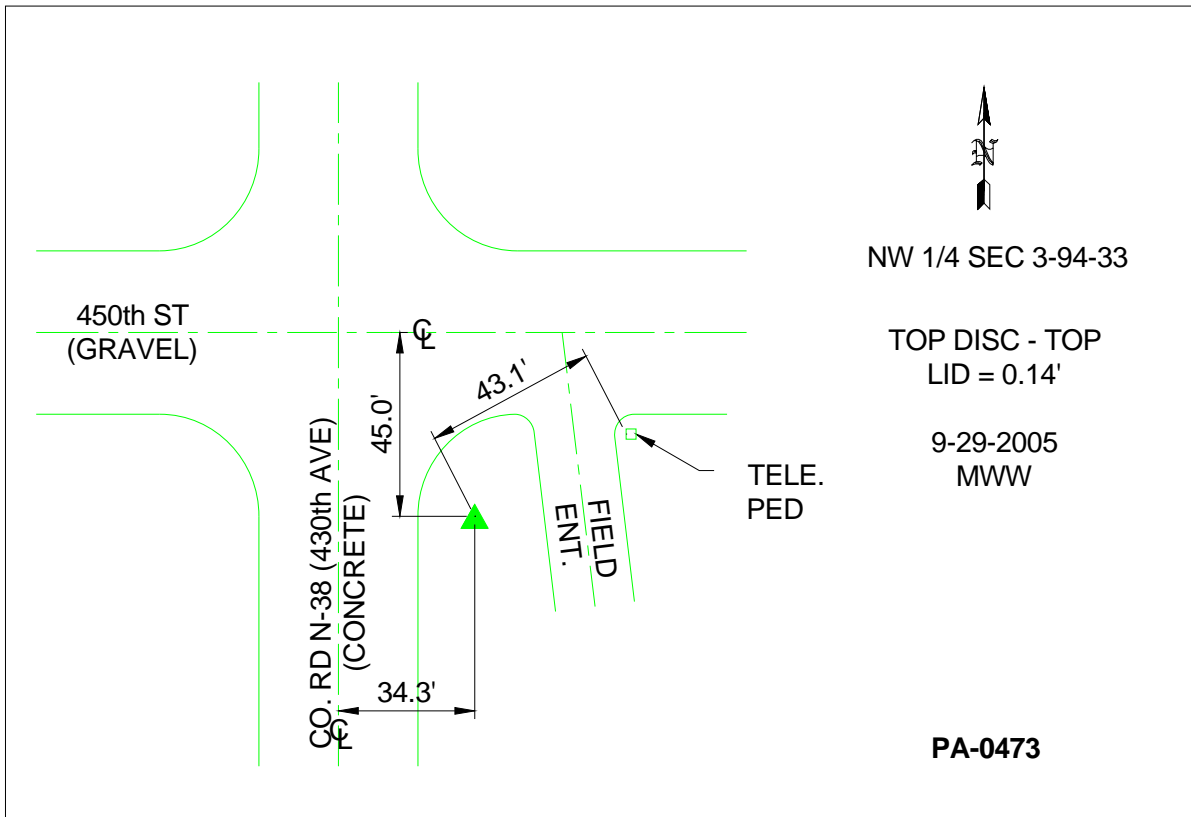
Northing: **3828113.40**sft Easting: **4590213.13**sft

Orthometric Height: **1217.57**sft Ellipsoid Height: **1123.24**sft **Geoid03**

Latitude: **42°59'42.35815"N** Longitude: **94°44'14.67970"W**

Mapping Angle: **-0°50'19"** Combination Scale Factor: **0.999908080**

Monument Type: Berntsen Top Security Rod Monument with a 3-1/4" dia. domed survey cap and permanent magnet encased in a 5"dia. PVC pipe with a NGS style aluminum access cover.



This document was prepared by DCI and GBC for use by Palo Alto County, Iowa.