

Palo Alto County, Iowa
Iowa North Zone (1401)
Horiz. Datum: NAD83(1996)
Vert. Datum: NAVD 1988
US Survey Feet
2005

Point Name: **481**

Designation: PA-0481 Palo Alto Co GPS Control Point (Set by Palo Alto Co. in 2004)

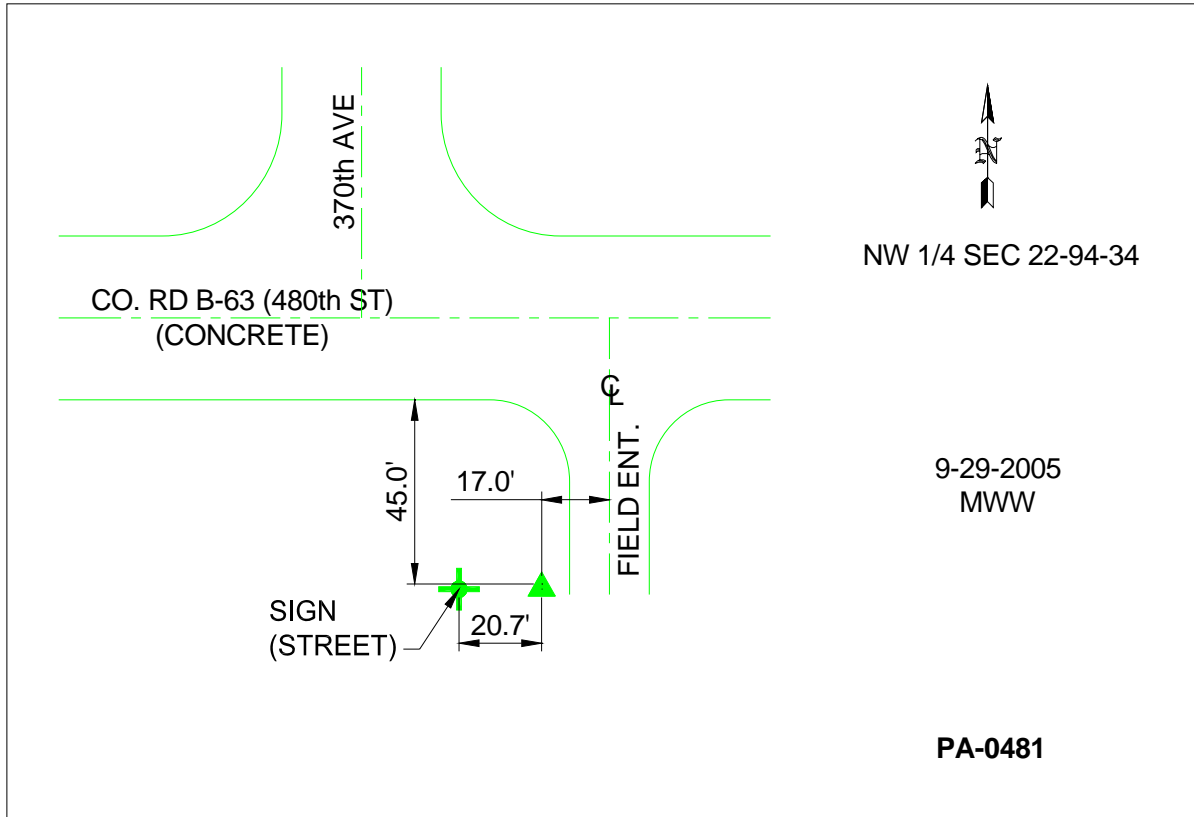
Northing: **3813146.91**sft Easting: **4558295.56**sft

Orthometric Height: **1335.96**sft Ellipsoid Height: **1241.58**sft **Geoid03**

Latitude: **42°57'09.70702"N** Longitude: **94°51'20.88619"W**

Mapping Angle: **-0°55'08"** Combination Scale Factor: **0.999898480**

Monument Type: Berntsen Top Security Rod Monument with a 3-1/4" dia. domed survey cap and permanent magnet encased in a 5"dia. PVC pipe with a NGS style aluminum access cover.



This document was prepared by DCI and GBC for use by Palo Alto County, Iowa.