

Palo Alto County, Iowa
Iowa North Zone (1401)
Horiz. Datum: NAD83(1996)
Vert. Datum: NAVD 1988
US Survey Feet
2005

Point Name: **485**

Designation: PA-0485 Palo Alto Co GPS Control Point (Set by Palo Alto Co. in 2004)

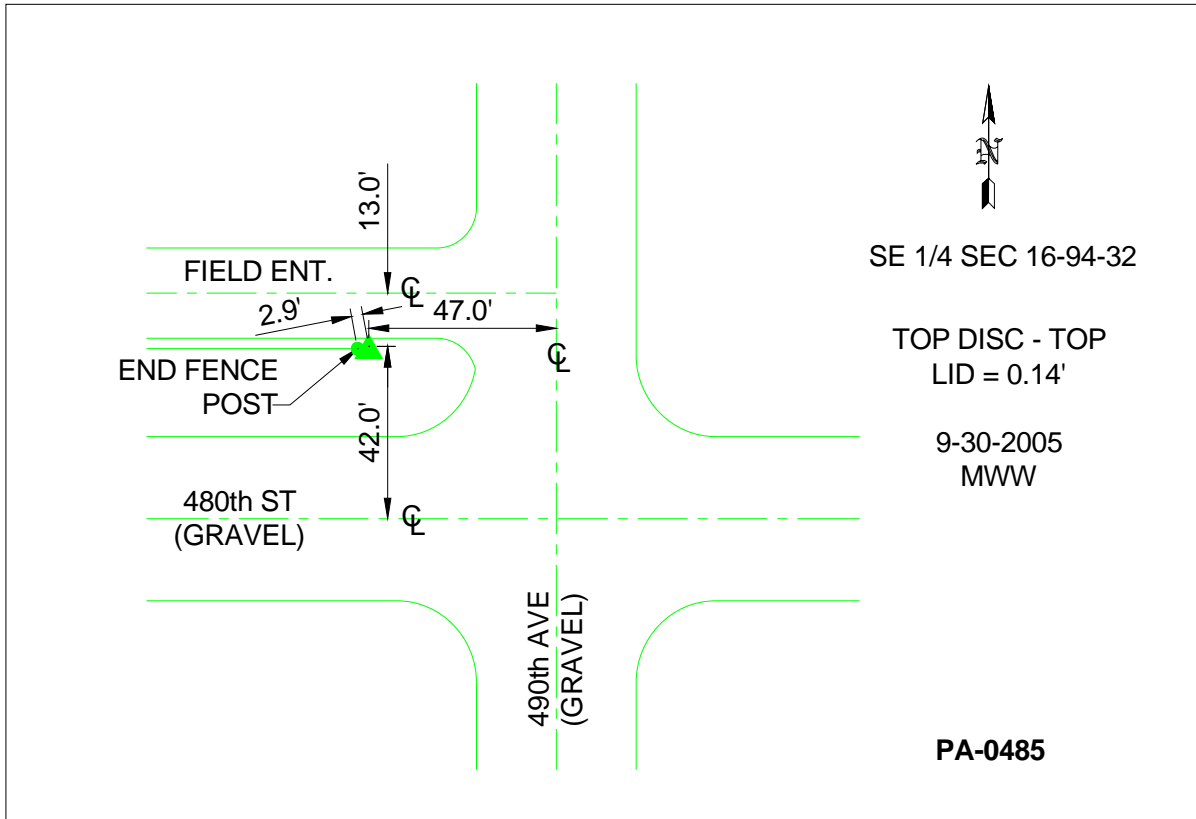
Northing: **3812163.30**sft Easting: **4621443.86**sft

Orthometric Height: **1190.02**sft Ellipsoid Height: **1095.76**sft **Geoid03**

Latitude: **42°57'09.12523"N** Longitude: **94°37'11.62420"W**

Mapping Angle: **-0°45'32"** Combination Scale Factor: **0.999905430**

Monument Type: Berntsen Top Security Rod Monument with a 3-1/4" dia. domed survey cap and permanent magnet encased in a 5"dia. PVC pipe with a NGS style aluminum access cover.



This document was prepared by DCI and GBC for use by Palo Alto County, Iowa.