

Palo Alto County, Iowa
Iowa North Zone (1401)
Horiz. Datum: NAD83(1996)
Vert. Datum: NAVD 1988
US Survey Feet
2005

Point Name: **486**

Designation: PA-0486 Palo Alto Co GPS Control Point (Set by Palo Alto Co. in 2004)

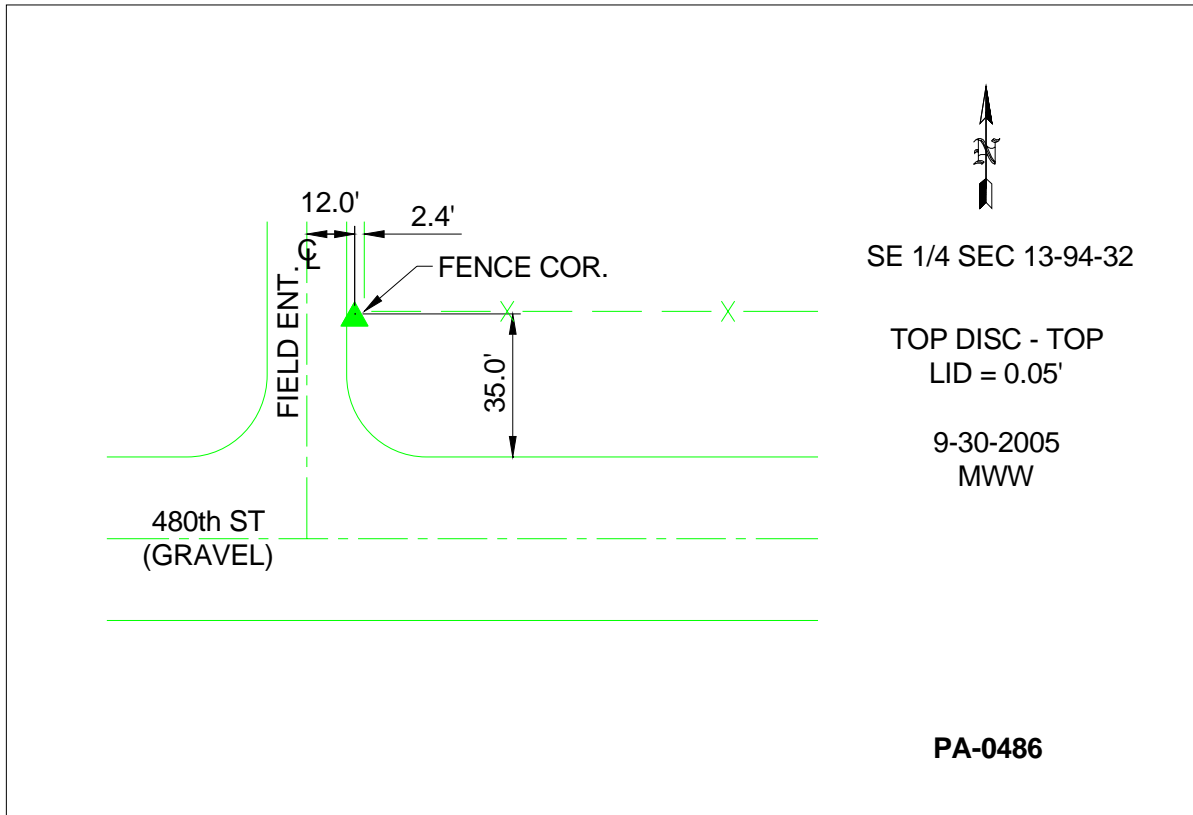
Northing: **3811927.32**sft Easting: **4636005.93**sft

Orthometric Height: **1172.59**sft Ellipsoid Height: **1078.32**sft **Geoid03**

Latitude: **42°57'08.65369"N** Longitude: **94°33'55.78307"W**

Mapping Angle: **-0°43'20"** Combination Scale Factor: **0.999906250**

Monument Type: Berntsen Top Security Rod Monument with a 3-1/4" dia. domed survey cap and permanent magnet encased in a 5" dia. PVC pipe with a NGS style aluminum access cover.



This document was prepared by DCI and GBC for use by Palo Alto County, Iowa.