

Palo Alto County, Iowa
 Iowa North Zone (1401)
 Horiz. Datum: NAD83(1996)
 Vert. Datum: NAVD 1988
 US Survey Feet
2005

Point Name: **498**

Designation: PA-0498 Palo Alto Co GPS Control Point (Set by Palo Alto Co. in 2004)

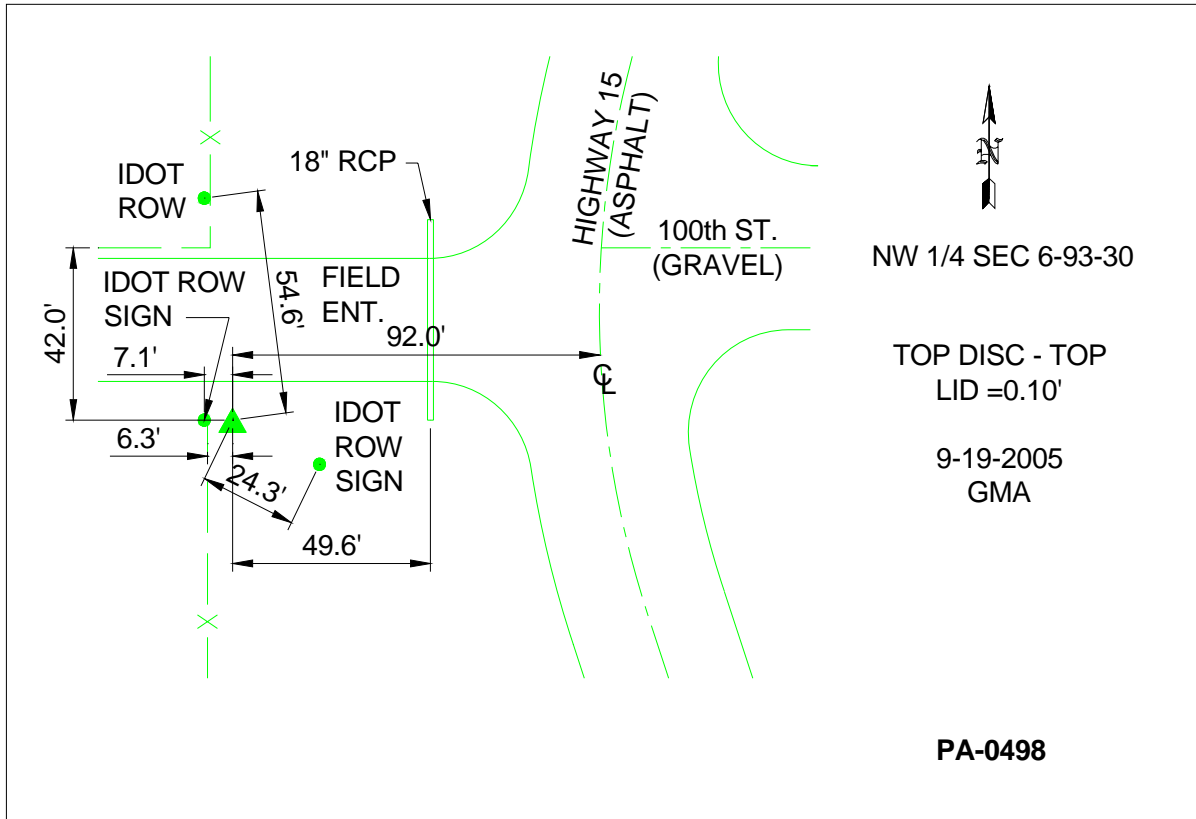
Northing: **3795341.03sft** Easting: **4668578.06sft**

Orthometric Height: **1167.38sft** Ellipsoid Height: **1072.59sft** **Geoid03**

Latitude: **42°54'28.65238"N** Longitude: **94°26'35.32395"W**

Mapping Angle: **-0°38'21"** Combination Scale Factor: **0.999902970**

Monument Type: Berntsen Top Security Rod Monument with a 3-1/4" dia. domed survey cap and permanent magnet encased in a 5"dia. PVC pipe with a NGS style aluminum access cover.



This document was prepared by DCI and GBC for use by Palo Alto County, Iowa.