

**Palo Alto County, Iowa**  
Iowa North Zone (1401)  
Horiz. Datum: NAD83(1996)  
Vert. Datum: NAVD 1988  
US Survey Feet  
**2005**

Point Name: **613**

**Designation:** 2005-613 Kossuth Co GPS Control Point

Northing: **3848152.70**sft Easting: **4674447.70**sft

Orthometric Height: **1193.06**sft Ellipsoid Height: **1098.90**sft **Geoid03**

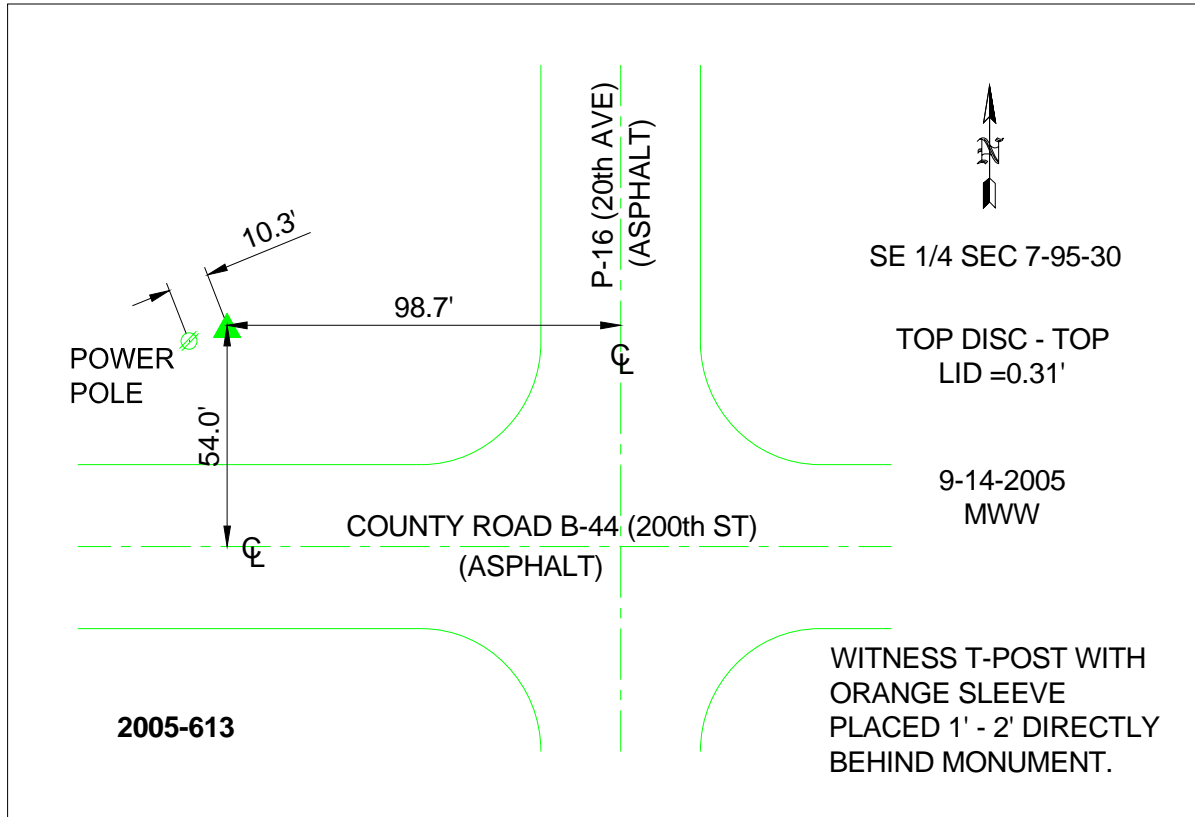
Latitude: **43°03'10.91311"N**

Longitude: **94°25'24.20708"W**

Mapping Angle: **-0°37'33"**

Combination Scale Factor: **0.999915530**

**Monument Type:** Berntsen Top Security Rod Monument with a 2-1/2" dia. domed survey cap and permanent magnet encased in a 6"dia. PVC pipe with a NGS style aluminum access cover.



*This document was prepared by DCI and GBC for use by Palo Alto County, Iowa.*