

Palo Alto County, Iowa
Iowa North Zone (1401)
Horiz. Datum: NAD83(1996)
Vert. Datum: NAVD 1988
US Survey Feet
2005

Point Name: **614**

Designation: 2005-614 Kossuth Co GPS Control Point

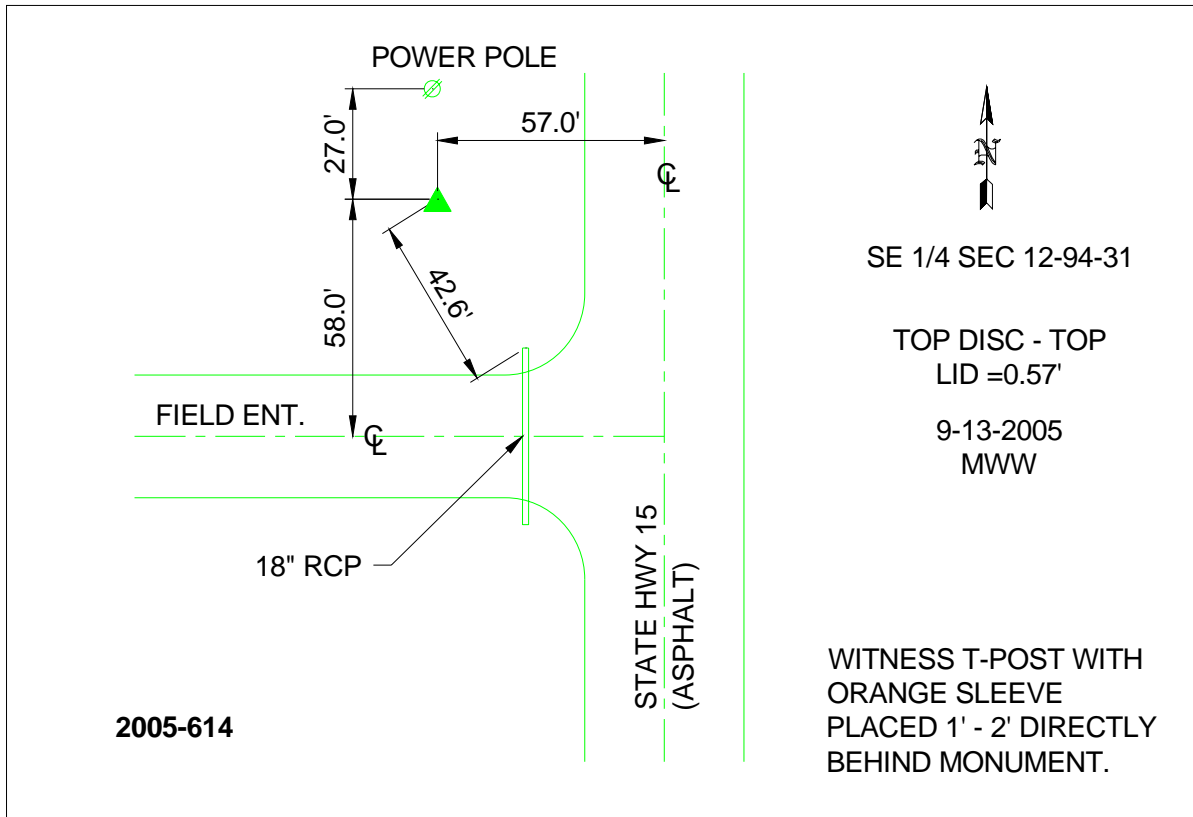
Northing: **3817825.58**sft Easting: **4668821.00**sft

Orthometric Height: **1186.60**sft Ellipsoid Height: **1092.10**sft **Geoid03**

Latitude: **42°58'10.76118"N** Longitude: **94°26'35.43049"W**

Mapping Angle: **-0°38'21"** Combination Scale Factor: **0.999907130**

Monument Type: Berntsen Top Security Rod Monument with a 2-1/2" dia. domed survey cap and permanent magnet encased in a 6"dia. PVC pipe with a NGS style aluminum access cover.



This document was prepared by DCI and GBC for use by Palo Alto County, Iowa.