

Palo Alto County, Iowa
Iowa North Zone (1401)
Horiz. Datum: NAD83(1996)
Vert. Datum: NAVD 1988
US Survey Feet
2005

Point Name: **622**

Designation: 2005-622 Kossuth Co GPS Control Point

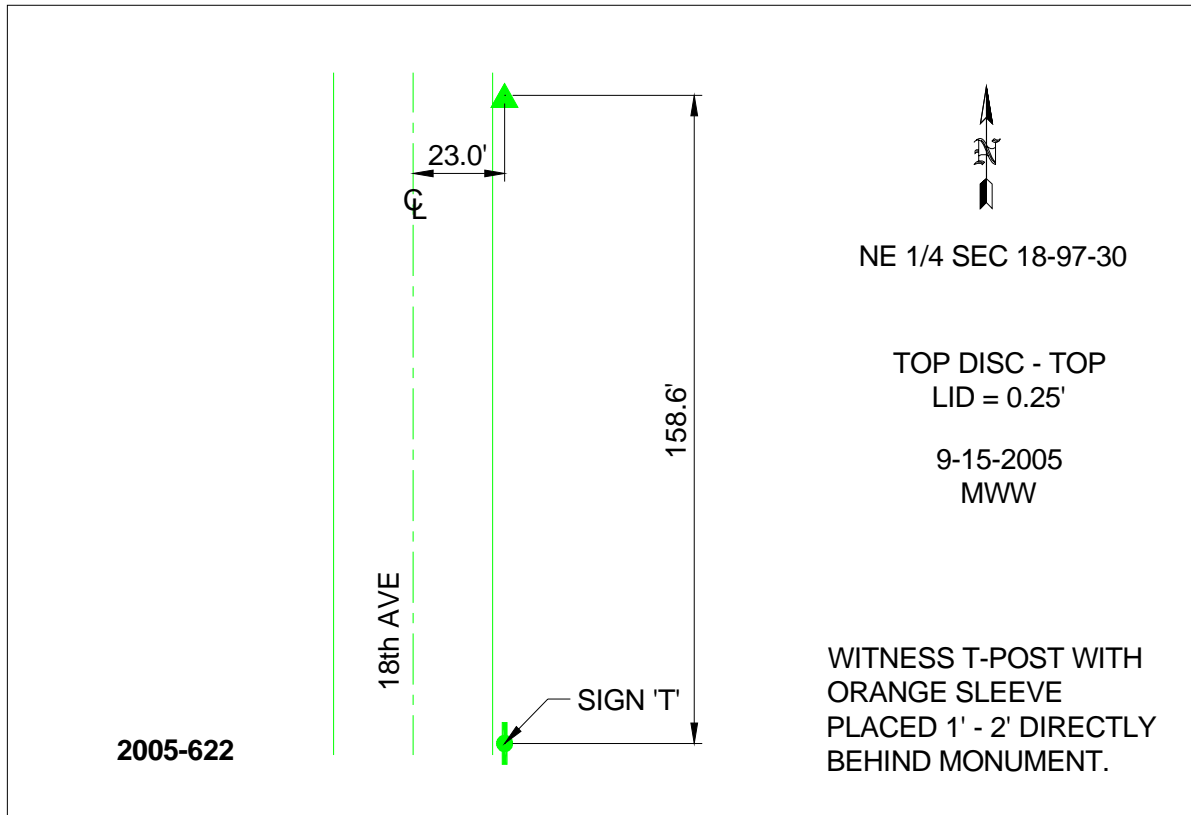
Northing: **3911030.04sft** Easting: **4673768.78sft**

Orthometric Height: **1242.88sft** Ellipsoid Height: **1149.27sft** **Geoid03**

Latitude: **43°13'31.85022"N** Longitude: **94°25'42.65219"W**

Mapping Angle: **-0°37'45"** Combination Scale Factor: **0.999937910**

Monument Type: Berntsen Top Security Rod Monument with a 2-1/2" dia. domed survey cap and permanent magnet encased in a 6"dia. PVC pipe with a NGS style aluminum access cover.



This document was prepared by DCI and GBC for use by Palo Alto County, Iowa.