

Palo Alto County, Iowa
Iowa North Zone (1401)
Horiz. Datum: NAD83(1996)
Vert. Datum: NAVD 1988
US Survey Feet
2005

Point Name: **7073**

Designation: 7073 Clay Co GPS Control Point (Set by Deni Assoc. Inc. in 1997)

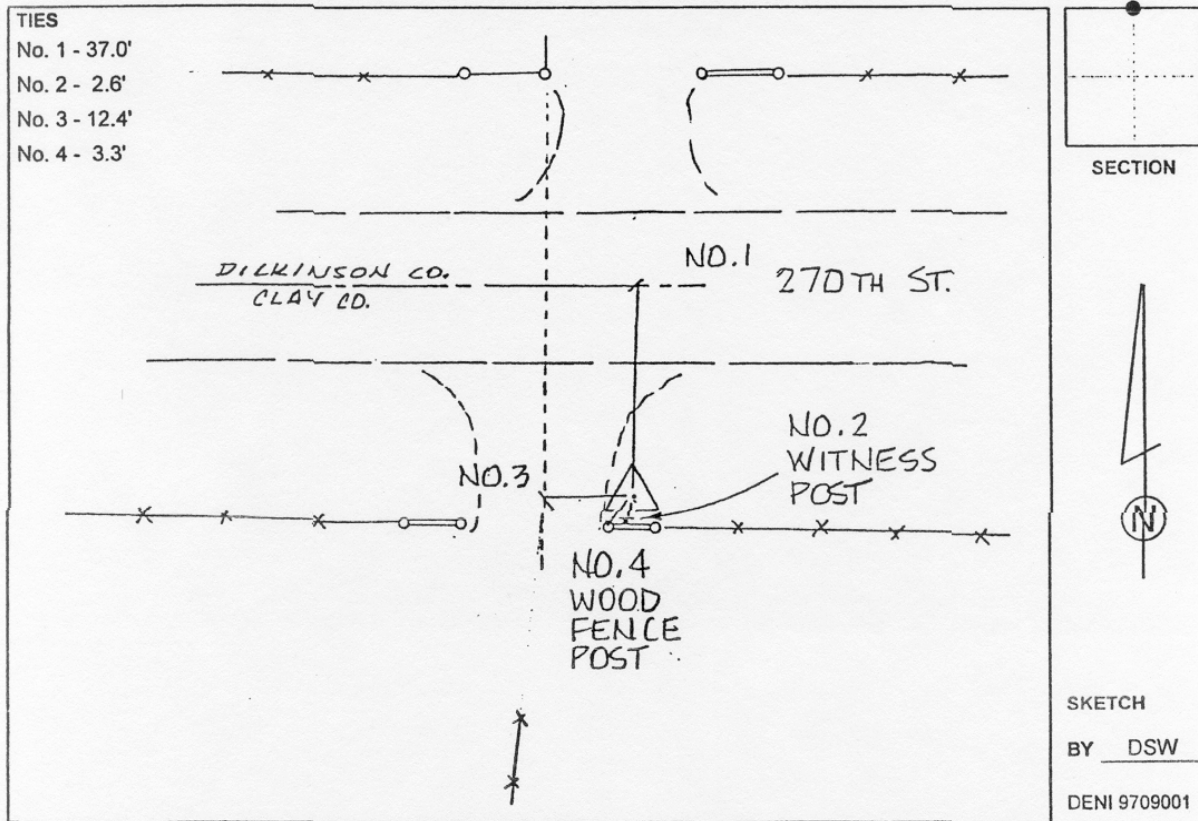
Northing: **3923604.03sft** Easting: **4541989.73sft**

Orthometric Height: **1418.75sft** Ellipsoid Height: **1325.04sft** **Geoid03**

Latitude: **43°15'17.92323"N** Longitude: **94°55'25.13287"W**

Mapping Angle: **-0°57'54"** Combination Scale Factor: **0.999934670**

Monument Type: 3-1/4" Aluminum disk set in poured-in-place concrete monument with 10" PVC collar.



This document was prepared by DCI and GBC for use by Palo Alto County, Iowa.