

Palo Alto County, Iowa
Iowa North Zone (1401)
Horiz. Datum: NAD83(1996)
Vert. Datum: NAVD 1988
US Survey Feet
2005

Point Name: **7074**

Designation: 7074 Clay Co GPS Control Point (Set by Deni Assoc. Inc. in 1997)

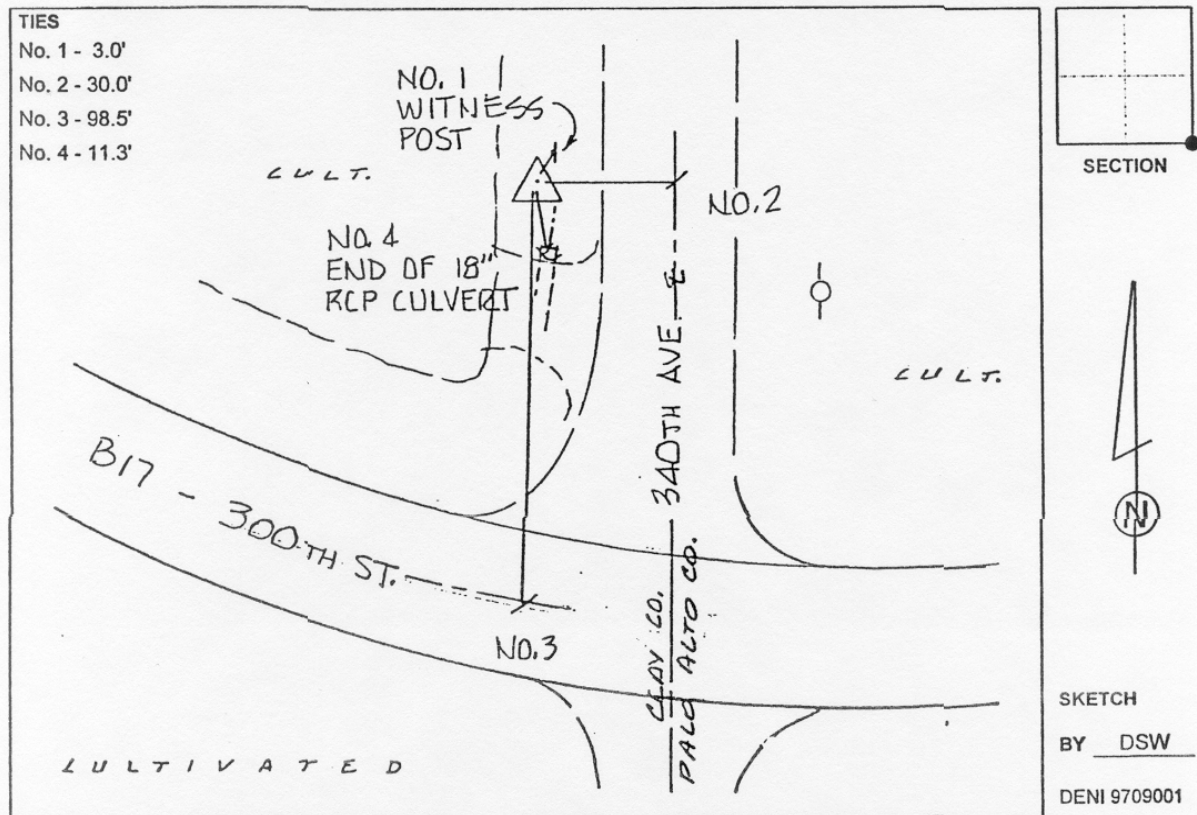
Northing: **3908055.19sft** Easting: **4544360.96sft**

Orthometric Height: **1394.90sft** Ellipsoid Height: **1300.91sft** **Geoid03**

Latitude: **43°12'44.76469"N** Longitude: **94°54'49.58169"W**

Mapping Angle: **-0°57'29"** Combination Scale Factor: **0.999928480**

Monument Type: 3-1/4" Aluminum disk set in poured-in-place concrete monument with 10" PVC collar.



This document was prepared by DCI and GBC for use by Palo Alto County, Iowa.