

**Palo Alto County, Iowa**  
Iowa North Zone (1401)  
Horiz. Datum: NAD83(1996)  
Vert. Datum: NAVD 1988  
US Survey Feet  
**2005**

Point Name: **7075**

**Designation:** 7075 Clay Co GPS Control Point (Set by Deni Assoc. Inc. in 1997)

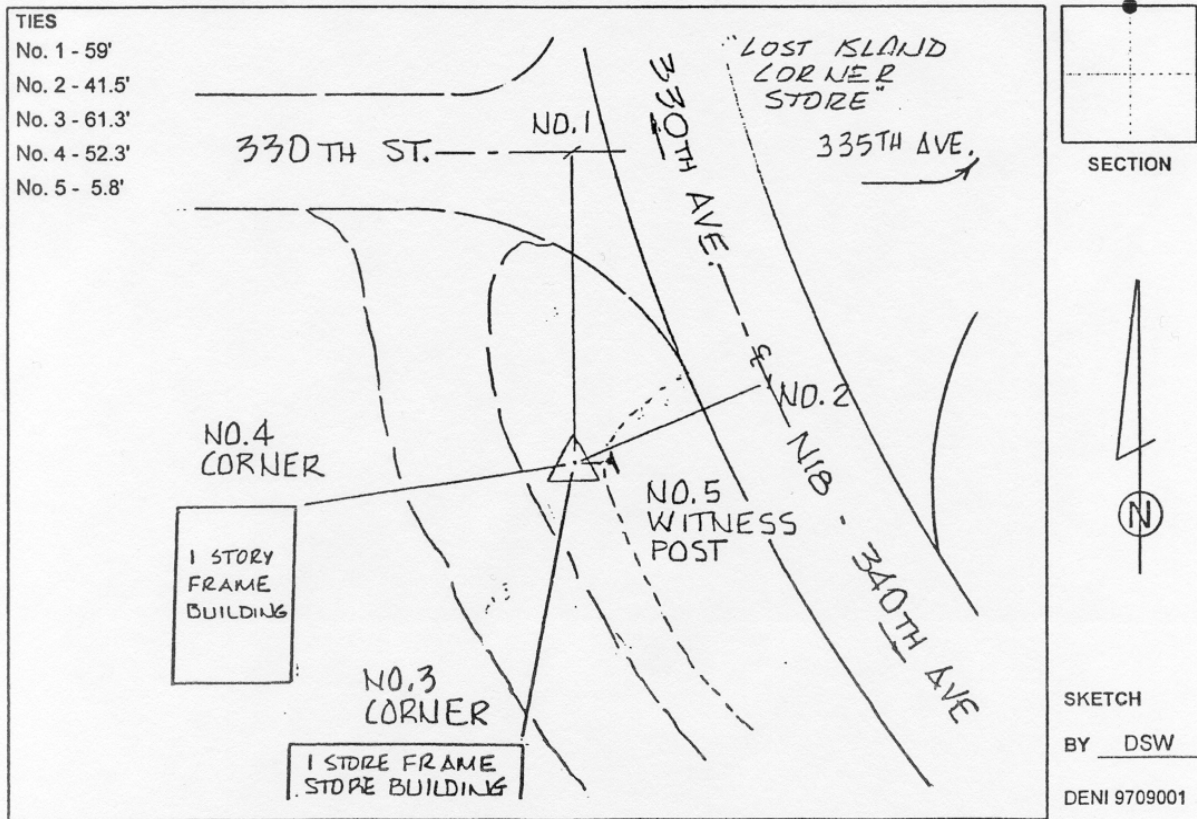
Northing: **3892119.41sft** Easting: **4541607.39sft**

Orthometric Height: **1352.88sft** Ellipsoid Height: **1258.66sft** **Geoid03**

Latitude: **43°10'06.93330"N** Longitude: **94°55'23.13718"W**

Mapping Angle: **-0°57'52"** Combination Scale Factor: **0.999923500**

**Monument Type:** 3-1/4" Aluminum disk set in poured-in-place concrete monument with 10" PVC collar.



*This document was prepared by DCI and GBC for use by Palo Alto County, Iowa.*